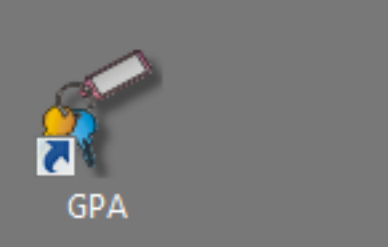
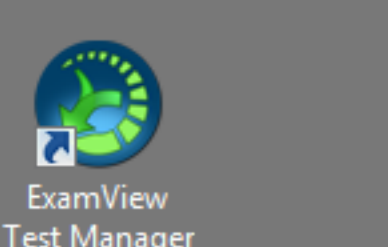
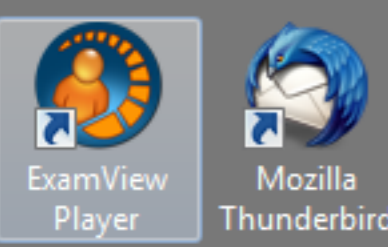
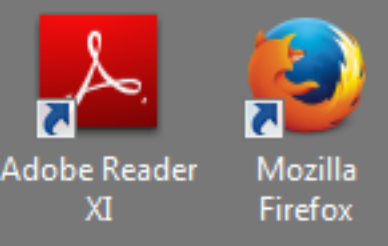
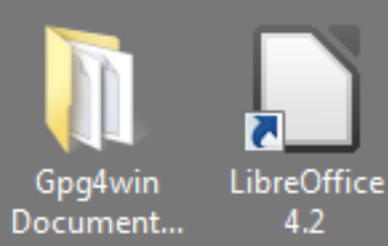
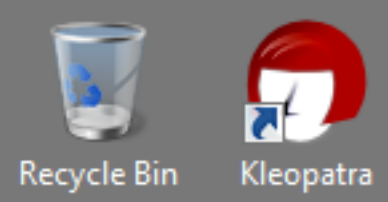


Windows 7 icacls (permissions) batch file

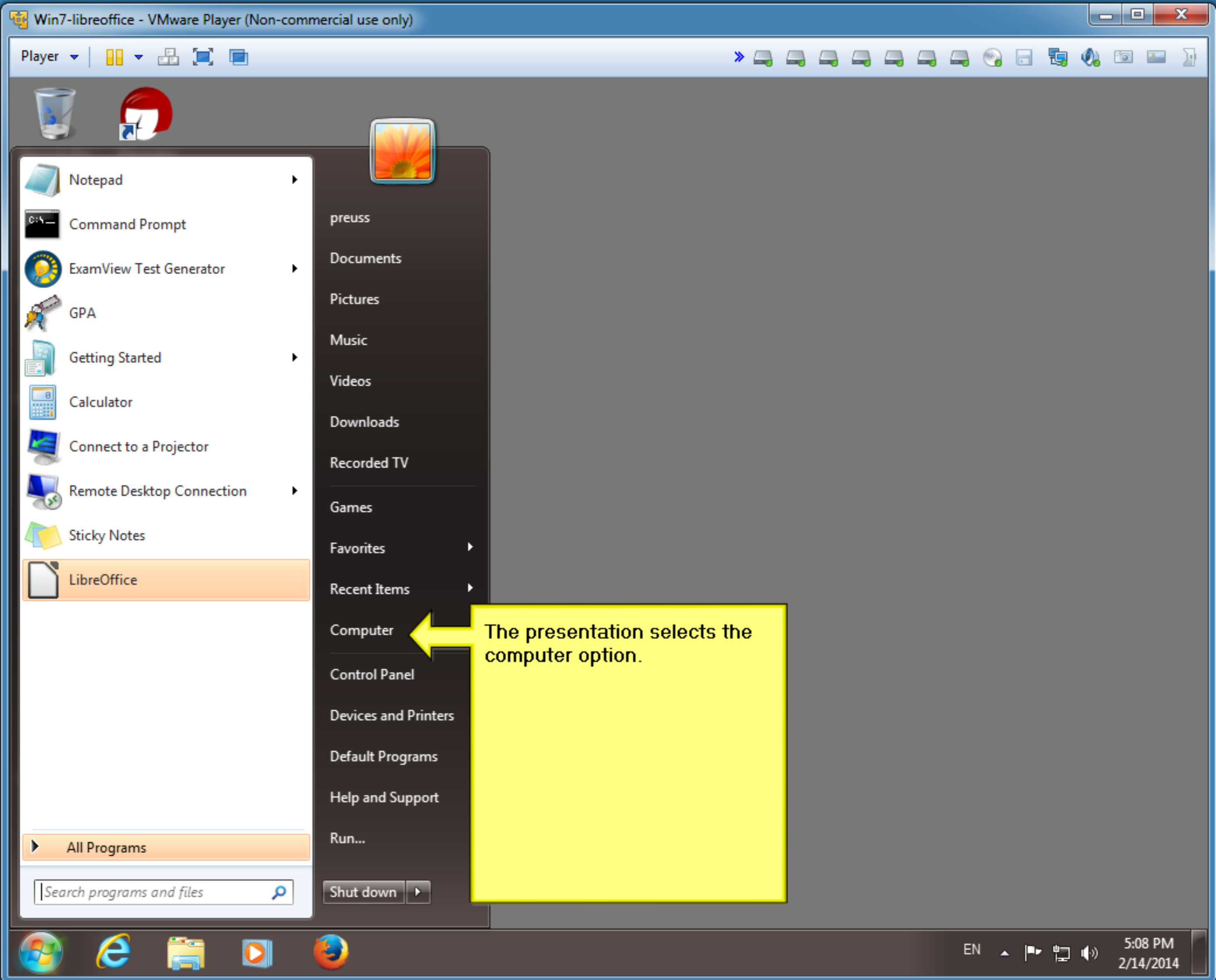
This presentation shows creating c:\documents and putting files in the folder (directory or subdirectory). The presentation creates a batch file to copy the files to other locations. Then, the presentation collects the permission settings in a file.

Preuss

2/14/2014



The presentation is logon as a non-administrative logon.



The presentation selects the computer option.

- Recycle Bin
- Kleopatra
- Gpg4win Document...
- LibreOffice 4.2
- Adobe Reader XI
- Mozilla Firefox
- ExamView Player
- Mozilla Thunderbird
- ExamView Test Ge...
- ExamView Test Manager
- GPA

Computer

Organize System properties Uninstall or change a program Map network drive

Hard Disk Drives (3)

- Local Disk (C:) 28.1 GB free of 59.8 GB
- spanned02 (E:) 10.9 GB free of 10.9 GB
- striped (F:) 3.94 GB free of 3.99 GB

Devices with Remo

- Floppy Disk Dr

Computer

- Local Disk (C:)
- spanned02 (E:)
- striped (F:)

Network

WIN7-AL Workgroup: WORKGROUP Memory: 4.00 GB Processor: Intel(R) Core(TM) i7-27...

The presentation will be using the attached disk volume E:

You may use another volume, if you changed E: in the batch file to the letter your volume is assigned.

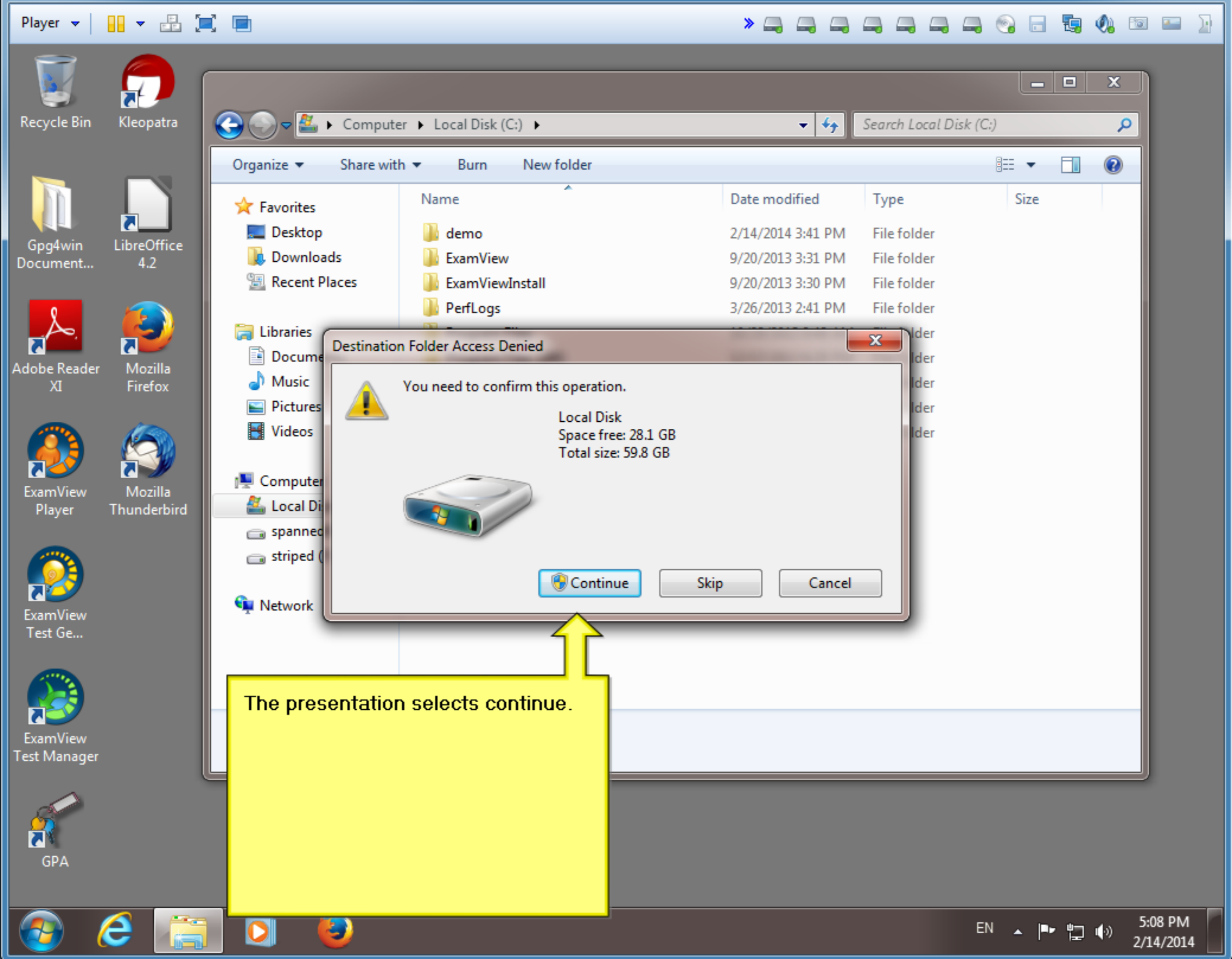
Computer > Local Disk (C:) > Search Local Disk (C:)

Organize Share with Burn New folder

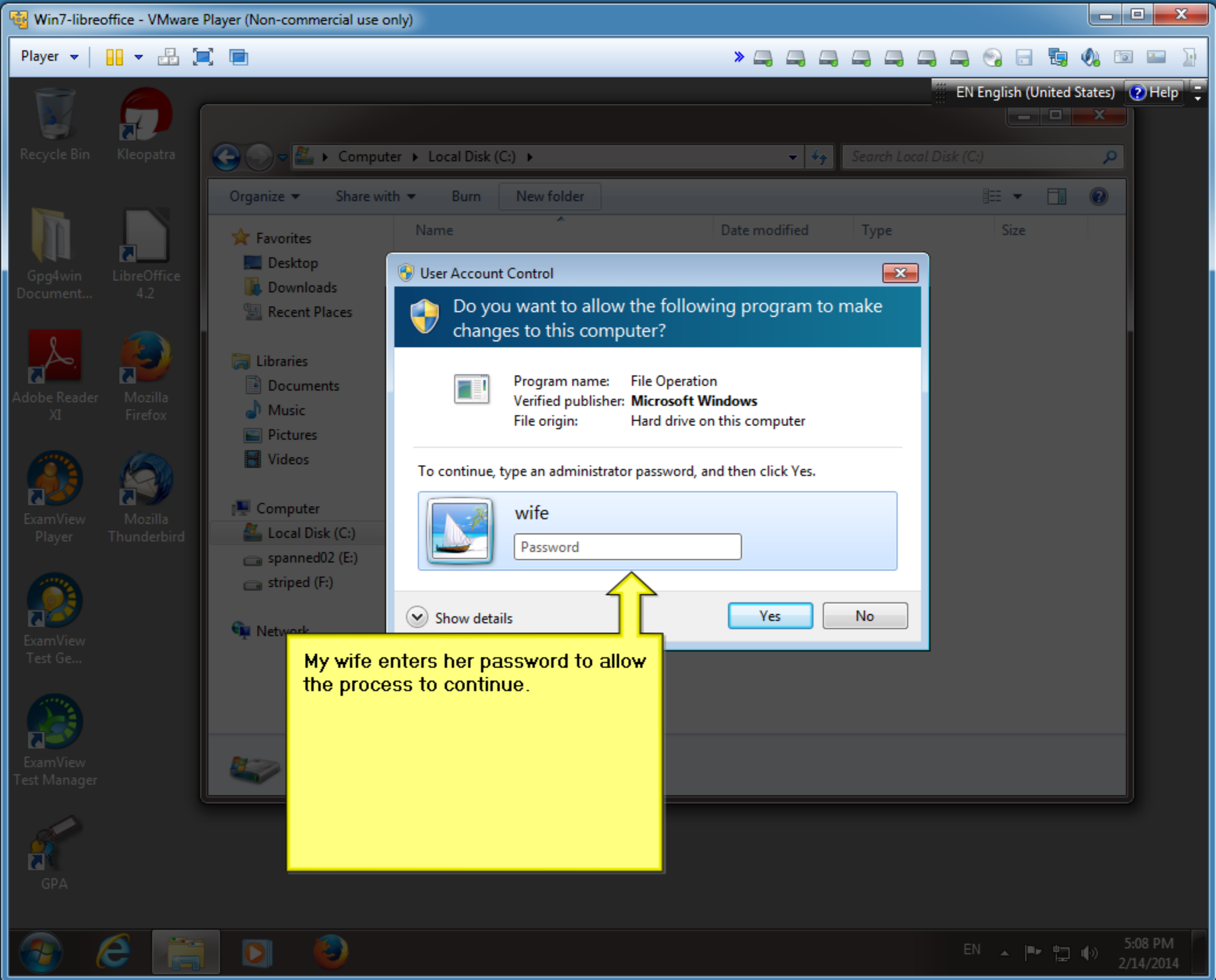
Name	Date modified	Type	Size
demo	2/14/2014 3:41 PM	File folder	
ExamView	9/20/2013 3:31 PM	File folder	
ExamViewInstall	9/20/2013 3:30 PM	File folder	
PerfLogs	3/26/2013 2:41 PM	File folder	
Program Files	10/29/2013 9:48 AM	File folder	
Program Files (x86)	12/17/2013 6:29 PM	File folder	
temp	10/21/2013 11:44 ...	File folder	
Users	3/18/2013 8:03 AM	File folder	
Windows	2/14/2014 4:18 PM	File folder	

9 items

The presentation selects drive C:. The first directory is made at the root of C:.



The presentation selects continue.



- Recycle Bin
- Kleopatra
- Gpg4win Document...
- LibreOffice 4.2
- Adobe Reader XI
- Mozilla Firefox
- ExamView Player
- Mozilla Thunderbird
- ExamView Test Ge...
- ExamView Test Manager
- GPA

Computer > Local Disk (C:) > Search Local Disk (C:)

Organize | Share with | Burn | New folder

Name	Date modified	Type	Size
Desktop			
Downloads			
Recent Places			
Documents			
Music			
Pictures			
Videos			
Local Disk (C:)			
spanned02 (E:)			
striped (F:)			

User Account Control

Do you want to allow the following program to make changes to this computer?

Program name: File Operation
Verified publisher: **Microsoft Windows**
File origin: Hard drive on this computer

To continue, type an administrator password, and then click Yes.

wife
Password

Show details | Yes | No

My wife enters her password to allow the process to continue.

Recycle Bin
Kleopatra
Gpg4win Document...
LibreOffice 4.2
Adobe Reader XI
Mozilla Firefox
ExamView Player
Mozilla Thunderbird
ExamView Test Ge...
ExamView Test Manager
GPA

Computer > Local Disk (C:) > Search Local Disk (C:)

Organize | Open | Include in library | Share with | Burn | New folder

Name	Date modified	Type	Size
demo	2/14/2014 3:41 PM	File folder	
ExamView	9/20/2013 3:31 PM	File folder	
ExamViewInstall	9/20/2013 3:30 PM	File folder	
PerfLogs	3/26/2013 2:41 PM	File folder	
Program Files	10/29/2013 9:48 AM	File folder	
Program Files (x86)	12/17/2013 6:29 PM	File folder	
temp	10/21/2013 11:44 ...	File folder	
Users	3/18/2013 8:03 AM	File folder	
Windows	2/14/2014 4:18 PM	File folder	
New folder	2/14/2014 5:09 PM	File folder	

2014 5:09 PM

The presentation renames the folder documents

Computer > Local Disk (C:) > documents

Search documents

Organize Include in library Share with New folder

Name	Date modified	Type	Size
This folder is empty.			

Computer
Local Disk (C:)
spanned02 (E:)
striped (F:)
Network

0 items

The presentation will download files from <http://brazil.minnesota.edu>

Minnesota State Community and Technical College
M|State
Information Technology Academic Department
Moorhead, MN

This site primarily provides instructional support for classes taught at Minnesota State Community and Technical College in Moorhead, MN. This site does provide information for selected Minnesota State University Moorhead Information Technology Academic Department. We have some items that may interest visitors, however no one has permission to damage this site.

Most visitors will find more information about Minnesota State Community and Technical College at <http://www.minnesota.edu> . Additional information about Minnesota State University Moorhead may be found at <http://www.mnstate.edu/> .

- [Fall Classes](#)
- [Spring Classes](#)
- [General Interest](#)



Microcomputer Operating System CPTR 1148 Spring 2013

These are the class materials for Mr. Preuss' Microcomputer Operating System class at Moorhead.

[Download the class syllabus](#)

<http://brazil.minnesota.edu/cptr1148/cptr1148/1148a.pdf>

[Download the iCalendar file for this class](#)

[Down the required TestOut or Lab Sim configuration directions](#)

[Lab 1](#)

[Lab 2](#)

[Lab 3](#)

[Lab 4](#)

[Lab 5](#)

[Lab 6](#)

[Lab 7](#)

[Lab 8](#)

[Lab 9](#)

[Lab 10](#)

[Examples Link](#)

- Open Link in New Tab
- Open Link in New Window
- Open Link in New Private Window
- Bookmark This Link
- Save Link As...
- Copy Link Location
- Inspect Element (Q)

The presentation right clicks on a link. The presentation selects Save Link As ...

Enter name of file to save to...

preuss > Downloads >

Organize | New folder

★ Favorites

- Desktop
- Downloads
- Recent Places

Libraries

- Documents
- Music
- Pictures
- Videos

Computer

Name
csci-download
dinka.bundle
hashcalc
1110104.pdf
1148101.pdf
Printable View - CSCI1110 01 Informatics

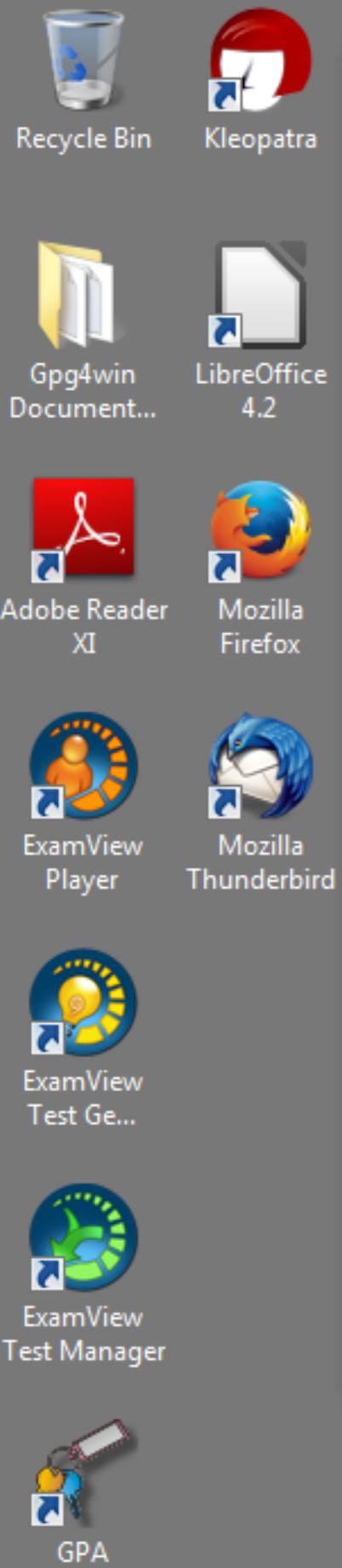
File name: 1148101.pdf

Save as type: Adobe Acrobat Document (*.pdf)

Hide Folders | Save | Cancel

The presentation saves the file in %USERPROFILE%\downloads

- [Lab 5](#)
- [Lab 6](#)
- [Lab 7](#)
- [Lab 8](#)
- [Lab 9](#)
- [Lab 10](#)
- [Examples Link](#)



Computer > Local Disk (C:) > documents

Search documents

Organize Include in library Share with New folder

Name	Date modified	Type	Size
This folder is empty.			

Computer
Local Disk (C:)
spanned02 (E:)
striped (F:)
Network

0 items

**All the desired files are downloaded.
The presentation opens
c:\documents.**

preuss > Downloads

Search Downloads

Organize Include in library Share with Burn New folder

38 items

Name	Date modified
...	2/4/20...
...	2/4/20...
...	10/22/...
...	2/26/2...
...	10/22/...
...	2/14/2...
...	2/14/2...
...	2/14/2...
...	2/14/2...
...	2/14/2...
...	2/14/2...
...	2/14/2...
...	2/14/2...
...	2/14/2...
1148108.pdf	2/14/2...
1148109.pdf	2/14/2...
1148110.pdf	2/14/2...
dinka.bundle.zip	2/4/20...
fsum.zip	2/26/2...
gpg4win-2.1.0.exe	3/1/20...
qpg4win-2.2.1.exe	10/23/...

The presentation opens a second window and selects the downloads folder.

documents

Size

0 items

Test manager

GPA

preuss > Downloads

Search Downloads

Organize | Open with Adobe Reader XI | Share with | Print | Burn | New folder

Name	Date modified
csci-download	2/4/2014
dinka.bundle	2/4/2014
hashcalc	10/22/2013
7z920-x64.msi	2/26/2014
1110104.pdf	10/23/2013
1148101.pdf	2/14/2014
1148102.pdf	2/14/2014
1148103.pdf	2/14/2014
1148104.pdf	2/14/2014
1148105.pdf	2/14/2014
1148106.pdf	2/14/2014
1148107.pdf	2/14/2014
1148108.pdf	2/14/2014
1148109.pdf	2/14/2014
1148110.pdf	2/14/2014
dinka.bundle.zip	2/14/2014
fsum.zip	2/14/2014
gpg4win-2.1.0.exe	3/1/2014
gpg4win-2.2.1.exe	10/23/2013

10 items selected Date modified: 2/14/2014 5:11 PM Date created: 2/13/2014 1:07 PM - 2/14/2014 5:11 PM Size: 348 KB

The presentation selects all the desired files. (You may hold down CTRL key and click each file you want).

The presentation drags the highlighted files to the c:\documents folder.

Test Manager

GPA

0 items

preuss > Downloads

Search Downloads

Organize | Include in library | Share with | Burn | New folder

★ Favorites

- Desktop
- Downloads
- Recent Places

Libraries

- Documents
- Music
- Pictures
- Videos

Computer

Computer > Local Disk (C:) > documents

Search documents

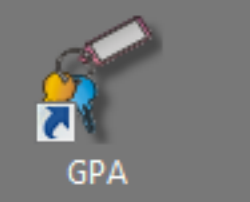
Organize | Open with Adobe Reader XI | Print | Burn | New folder

Name	Date modified	Type	Size
1148101.pdf	2/14/2014 5:10 PM	Adobe Acrobat D...	27 KB
1148102.pdf	2/14/2014 5:10 PM	Adobe Acrobat D...	26 KB
1148103.pdf	2/14/2014 5:11 PM	Adobe Acrobat D...	30 KB
1148104.pdf	2/14/2014 5:11 PM	Adobe Acrobat D...	88 KB
1148105.pdf	2/14/2014 5:11 PM	Adobe Acrobat D...	30 KB
1148106.pdf	2/14/2014 5:11 PM	Adobe Acrobat D...	34 KB
1148107.pdf	2/14/2014 5:11 PM	Adobe Acrobat D...	28 KB
1148108.pdf	2/14/2014 5:11 PM	Adobe Acrobat D...	31 KB
1148109.pdf	2/14/2014 5:11 PM	Adobe Acrobat D...	29 KB
1148110.pdf	2/14/2014 5:11 PM	Adobe Acrobat D...	29 KB

The files are copied to c:\documents.

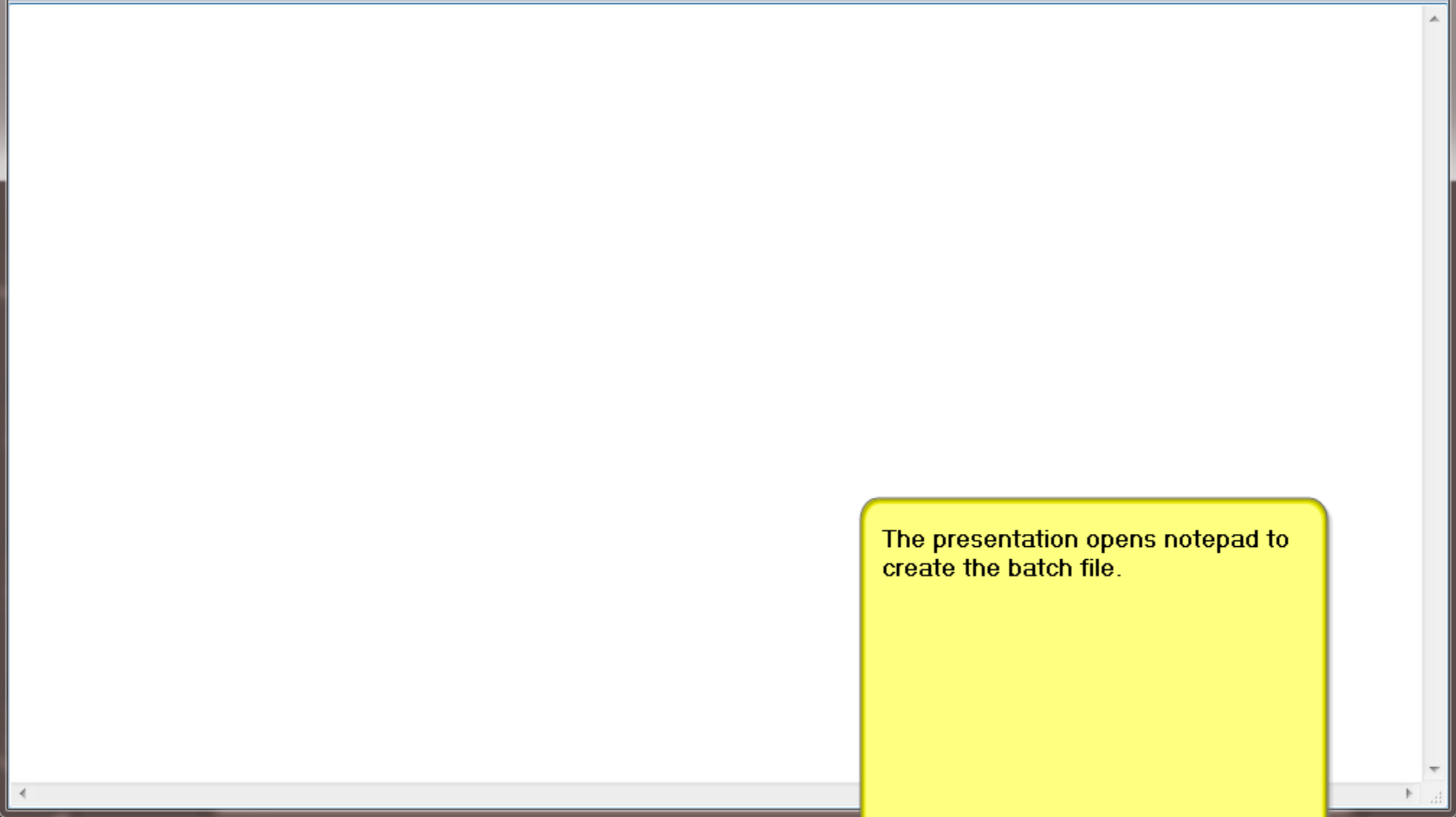
10 items selected Date modified: 2/14/2014 5:11 PM Date created: 2/13/2014 1:07 PM - 2/14/2014 5:11 PM

Size: 348 KB



Untitled - Notepad

File Edit Format View Help



The presentation opens notepad to create the batch file.

GPA

```
REM This will collect the mac address, local file permissions, %USERPROFILE%\documents\documents permissions,  
REM c:\documents permissions, e:\documents permissions.  
REM This assumes E: is a separate volume.  
REM Type 'set' (no quotes) at the command prompt to see the value of %USERPROFILE and %HOMEPATH%  
REM Preuss 2/14/2014  
  
echo 'This is the computer's MAC (layer 2) address.' >> icacIs_rpt01.txt  
getmac >> icacIs_rpt01.txt  
  
echo 'This creates a documents folder in My documents folder'. >> icacIs_rpt01.txt  
echo 'The command is md %HOMEPATH%\documents\documents' >> icacIs_rpt01.txt  
md %HOMEPATH%\documents\documents  
  
echo 'This creates a documents folder in E:.' >> icacIs_rpt01.txt  
echo 'The command is md e:\documents' >> icacIs_rpt01.txt  
md e:\documents  
  
echo 'This copies all the files from c:\documents to %USERPROFILE%\documents\documents' >> icacIs_rpt01.txt  
echo 'The command is copy c:\documents\*. * %HOMEPATH%\documents\documents' >> icacIs_rpt01.txt  
copy c:\documents\*. * %HOMEPATH%\documents\documents  
  
echo 'This copies all the files from c:\documents to e:\documents' >> icacIs_rpt01.txt  
echo 'The command is copy c:\documents\*. * %HOMEPATH%\documents\documents' >> icacIs_rpt01.txt  
copy c:\documents\*. * %HOMEPATH%\documents\documents  
  
echo 'This is the permissions settings for all the local files.' >> icacIs_rpt01.txt  
icacls * /C >> icacIs_rpt01.txt >> icacIs_rpt01.txt  
  
echo 'This is the permission settings for all the files in %USERPROFILE%\documents\documents' >> icacIs_rpt01.txt  
icacls %USERPROFILE%\documents\documents\* /C >> icacIs_rpt01.txt  
  
echo 'This is the permission settings for all the files in c:\documents.' >> icacIs_rpt01.txt  
icacls c:\documents\* /C >> icacIs_rpt01.txt  
  
echo 'This is the permission settings for all the files in e:\documents.' >> icacIs_rpt01.txt  
icacls e:\documents\* /C >> icacIs_rpt01.txt  
  
echo 'This is the source code for this batch file.' >> icacIs_rpt01.txt  
type rpt_icacIs01.bat >> icacIs_rpt01.txt  
notepad icacIs_rpt01.txt|
```

This is the batch file
entered by the
presentation.

```

File Edit Format View Help
REM This will collect the mac address, local file permissions, %USERPROFILE%\documents\documents permissions,
REM c:\documents permissions, e:\documents permissions.
REM This assumes E: is a separate volume.
REM Type 'set' (no quotes) at the command prompt to see the value of %USERPROFILE and %HOMEPATH%
REM Preuss 2/14/2014

echo 'This is the computer's MAC (layer 2)
getmac >> icacIs_rpt01.txt

echo 'This creates a documents folder in My
echo 'The command is md %HOMEPATH%\document
md %HOMEPATH%\documents\documents

echo 'This creates a documents folder in E:
echo 'The command is md e:\documents'>> ica
md e:\documents

echo 'This copies all the files from c:\doc
*.
nts\
\doc
*.
nts\
for
ls_r
or a
s\*
or a
1. tx
or a
1. tx
batc
type rpt_icacIs01.bat >> icacIs_rpt01.txt
notepad icacIs_rpt01.txt

```

The presentation saves the batch file in c:\documents.

The file name matches the batch file name rpt_icacIs01.bat

The file Save as type is All Files.

Save As

Local Disk (C:) > documents

Organize | New folder

Name	Date modified	Type
1148101.pdf	2/14/2014 5:10 PM	Adobe Ac
1148102.pdf	2/14/2014 5:10 PM	Adobe Ac
1148103.pdf	2/14/2014 5:11 PM	Adobe Ac
1148104.pdf	2/14/2014 5:11 PM	Adobe Ac
1148105.pdf	2/14/2014 5:11 PM	Adobe Ac
1148106.pdf	2/14/2014 5:11 PM	Adobe Ac
1148107.pdf	2/14/2014 5:11 PM	Adobe Ac
1148108.pdf	2/14/2014 5:11 PM	Adobe Ac
1148109.pdf	2/14/2014 5:11 PM	Adobe Ac
1148110.pdf	2/14/2014 5:11 PM	Adobe Ac

File name: rpt_icacIs01.bat

Save as type: All Files (*.*)

Encoding: ANSI

Save Cancel

- Recycle Bin
- Kleopatra
- Gpg4win Document...
- LibreOffice 4.2
- Adobe Reader XI
- Mozilla Firefox
- ExamView Player
- Mozilla Thunderbird
- ExamView Test Ge...
- ExamView Test Manager
- GPA

Computer > Local Disk (C:) > documents

Search documents

Organize Include in library Share with Burn New folder

Name	Date modified	Type	Size
1148101.pdf	2/14/2014 5:10 PM	Adobe Acrobat D...	27 KB
1148102.pdf	2/14/2014 5:10 PM	Adobe Acrobat D...	26 KB
1148103.pdf	2/14/2014 5:11 PM	Adobe Acrobat D...	30 KB
1148104.pdf	2/14/2014 5:11 PM	Adobe Acrobat D...	88 KB
1148105.pdf	2/14/2014 5:11 PM	Adobe Acrobat D...	30 KB
1148106.pdf	2/14/2014 5:11 PM	Adobe Acrobat D...	34 KB
1148107.pdf	2/14/2014 5:11 PM	Adobe Acrobat D...	28 KB
1148108.pdf	2/14/2014 5:11 PM	Adobe Acrobat D...	31 KB
1148109.pdf	2/14/2014 5:11 PM	Adobe Acrobat D...	29 KB
1148110.pdf	2/14/2014 5:11 PM	Adobe Acrobat D...	29 KB
rpt_icacis01.bat	2/14/2014 5:59 PM	Windows Batch File	2 KB

11 items

The batch files double clicks on rpt_icacis01.bat

```
'This is the computer's MAC (layer 2) address.'
```

```
Physical Address      Transport Name
=====
```

```
00-0C-29-E9-85-09    \Device\Tcpip_{8C35E213-2FAF-46E2-A0F4-FCDE6BDDA2F0}
```

```
'This creates a documents folder in My documents folder'.
```

```
'The command is md %HOMEPATH%\documents\documents'
```

```
'This creates a documents folder in E:'
```

```
'The command is md e:\documents'
```

```
'This copies all the files from c:\documents to c:\Users\preuss\documents\documents'
```

```
'The command is copy c:\documents\*. * \Users\preuss\documents\documents'
```

```
'This copies all the files from c:\documents to e:\documents'
```

```
'The command is copy c:\documents\*. * \Users\preuss\documents\documents'
```

```
'This is the permissions settings for all the local files.'
```

```
1148101.pdf NT AUTHORITY\Authenticated Users:(I)(M)          NT AUTHORITY\SYSTEM:(I)(F)          BUILTIN\Administrators:(I)(M)
```

```
) (F)          BUILTIN\Administrators:(I)(F)1148109.pdf NT AUTHORITY\Authenticated Users:(I)(M)          NT AUTHORITY\SYSTEM:(I)(F)
```

```
'This is the permission settings for all the files in c:\Users\preuss\documents\documents'
```

```
c:\Users\preuss\documents\documents\1148101.pdf win7-a1\preuss:(I)(M)          NT AUTHORITY\Authenticated Users:(I)(M)          NT AUTHORITY\SYSTEM:(I)(F)          BUILTIN\Administrators:(I)(F)
```

```
NT AUTHORITY\SYSTEM:(I)(F)          BUILTIN\Administrators:(I)(F)C:\Users\preuss\documents\documents\icacis_rpt01.bat win7-a1\preuss:(I)(M)
```

```
Successfully processed 13 files; Failed processing 0 files
```

```
'This is the permission settings for all the files in c:\documents.'
```

```
c:\documents\1148101.pdf NT AUTHORITY\Authenticated Users:(I)(M)          NT AUTHORITY\SYSTEM:(I)(F)          BUILTIN\Administrators:(I)(F)
```

```
c:\documents\1148107.pdf NT AUTHORITY\Authenticated Users:(I)(M)          NT AUTHORITY\SYSTEM:(I)(F)          BUILTIN\Administrators:(I)(F)
```

```
Successfully processed 12 files; Failed processing 0 files
```

```
'This is the permission settings for all the files in e:\documents.'
```

```
e:\documents\22720.odt BUILTIN\Administrators:(I)(F)          NT AUTHORITY\SYSTEM:(I)(F)          BUILTIN\Users:(I)(RX)
```

```
Successfully processed 5 files; Failed processing 0 files
```

```
'This is the source code for this batch file.'
```

```
REM This will collect the mac address, local file permissions, %USERPROFILE%\documents\documents permissions,
```

```
REM c:\documents permissions, e:\documents permissions.
```

```
REM This assumes E: is a separate volume.
```

```
REM Type 'set' (no quotes) at the command prompt to see the value of %USERPROFILE and %HOMEPATH%
```

```
REM Preuss 2/14/2014
```

```
echo 'This is the computer's MAC (layer 2) address.' >> icacis_rpt01.txt
```

```
getmac >> icacis_rpt01.txt
```

```
echo 'This creates a documents folder in My documents folder'. >> icacis_rpt01.txt
```

```
echo 'The command is md %HOMEPATH%\documents\documents' >> icacis_rpt01.txt
```

```
md %HOMEPATH%\documents\documents
```

```
echo 'This creates a documents folder in E:'>> icacis_rpt01.txt
```

```
echo 'The command is md e:\documents'>> icacis_rpt01.txt
```

This is partial output of the batch file. The contents may be copied to a word processor and saved as a pdf file.