

OpenSUSE simple USB terminal copy

This presentation shows mounting a USB drive in OpenSUSE. The presentation shows modifying Dolphin to see the location of the USB drive mount. The presentation shows using the terminal/command line method of copying files from the USB drive to OpenSUSE.

Hardware/Software in this presentation

Operating System: OpenSUSE Leap 42.2 (M State Moorhead spring 2017 version)

Operating System: Windows 10 Anniversary Update

Preuss

4/25/2017



Home



Trash

The presentation logs into Linux.



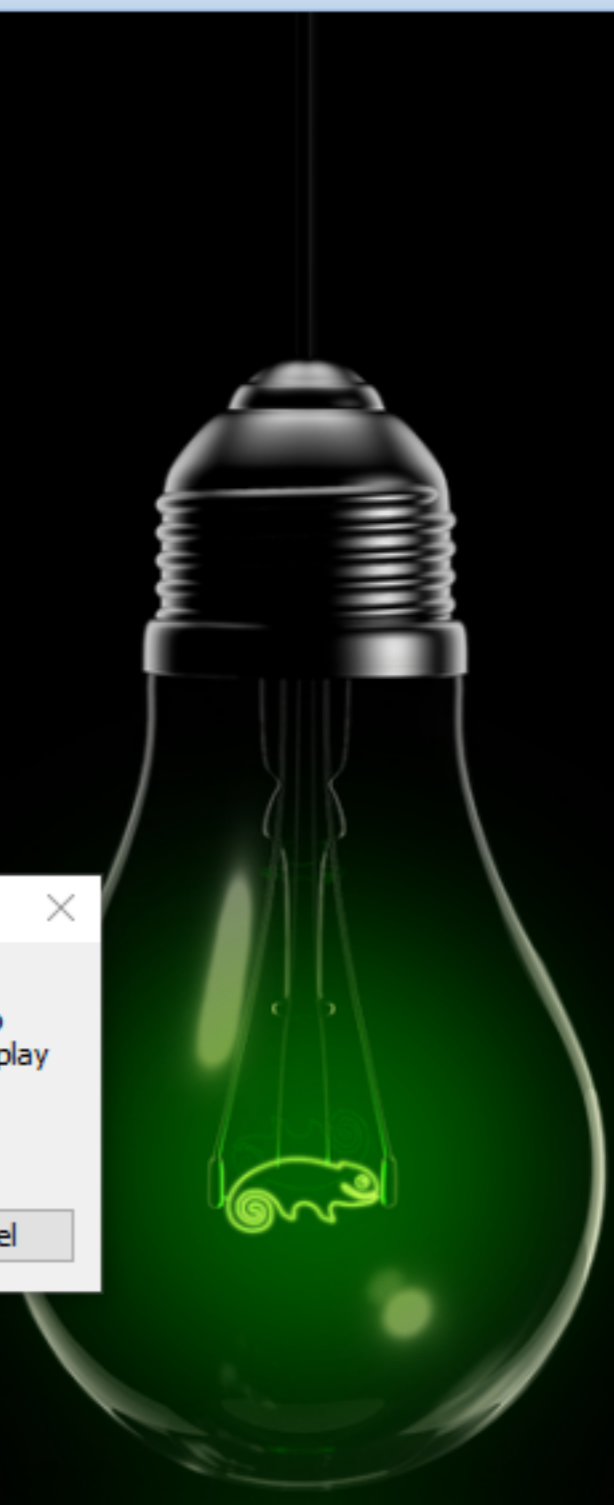
Player ▾ | [Pause] [Full Screen] [Screenshot] [Undo] [Redo]

- File >
- Power >
- Removable Devices >
- Send Ctrl+Alt+Del
- Manage >
- Full Screen Ctrl+Alt+Enter
- Unity
- Help >
- Exit

- CD/DVD (IDE) >
- ✓ Network Adapter >
- Sound Card >
- Kingston DataTraveler 2.0 >
- Broadcom 5880 >
- Shared Broadcom Corp Contacted SmartCard 0 >

- Connect (Disconnect from host)
- Change Icon...
- ✓ Show Icon

The presentation inserts a USB drive into the physical machine. Using the menu shown, the presentation connects the USB drive to the virtual machine.



opensus-s2017a - VMware Workstation 12 Player

A USB device is about to be unplugged from the host and connected to this virtual machine. It will first be stopped to enable safe removal. With some devices, the host may display the message "The device can now safely be removed."

Do not show this message again

OK Cancel

The presentation selects "OK" to continue the operation.



Device Notifier

Storage Volume

- MSCTC
- Download Photos with digiKam
- Open with File Manager

The presentation selects "Open with File Manager".



MSCTC — Dolphin

Find Preview Split Control

MSCTC

example_scripts	FOUND.000	installed	linux_login	never10	scripts
System Volume Information	cptr2224_master_lab_list_spring2017.docx	cptr2236 Master Lab List spring 2017.docx	cptr2245-master-lab-spring2017.docx	cptr2272-master-lab-spring2017.docx	csci1110-master-lab-spring2017.docx
csis441_master_lab_spring2017.docx	DScIS-Application.pdf	Preuss_vehicle_use_mstate.pdf	small_vm.txt	snuffy02.txt	spring2017.ics

7 Folders, 11 Files (2.0 MiB) | 1.1 GiB free

The file manager opens showing the files on the USB drive.

MSCTC — Dolphin

Find Preview Split Control

Places: Home, Network, Root, Trash

Recently Saved: Today, Yesterday, This Month, Last Month

Search For: Documents, Images, Audio Files, Videos

Devices: 28.0 GiB Hard Drive, 10.0 GiB Hard Drive, MSCTC

MSCTC

- example_scripts
- FOUND.000
- System Volume Information
- cptr2224_master_lab_list_spring2017.docx
- csis441_master_lab_spring2017.docx
- DScIS-Application.pdf
- scripts
- master-2017.
- csci1110-master-lab-spring2017.docx
- .txt
- spring2017.ics

Control

- Undo: Trash (Ctrl+Z)
- Select All (Ctrl+A)
- Invert Selection (Ctrl+Shift+A)
- View Mode >
- Sort By >
- Additional Information >
- Show in Groups
- Hidden Files (Alt+)
- Reload (F5)
- Adjust View Properties...
- Panels >
- Location Bar >
- Go >
- Tools >
- Configure Shortcuts...
- Configure Toolbars...
- Configure Dolphin...
- Help >
- Show Menubar (Ctrl+M)

1.1 GiB free

The presentation reconfigures Dolphin as shown. At this point, the presentation selects "Configure Dolphin".



MSCTC — Dolphin

Dolphin Preferences — Dolphin

Startup

Home Folder

Location:

- Split view mode
- Editable location bar
- Show full path inside location bar
- Show filter bar

7 Folders, 11 Files (2.0 MiB) | 1.1 GiB free

The presentation configures Dolphin as shown. The presentation selects "OK" to continue.



MSCTC — Dolphin

Find Preview Split Control

Places: /run/media/preuss/MSCTC/

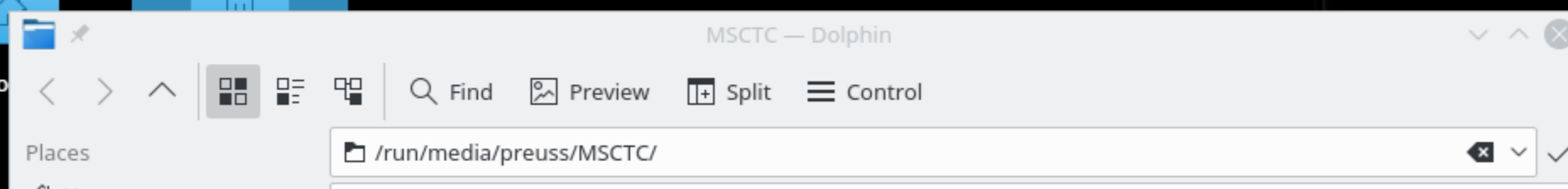
- Home
- Network

FOUND.000	installed	linux_login	never10	scripts
cptr2224_ master_lab_list_ spring2017.docx	cptr2236 Master Lab List spring 2017.docx	cptr2245-master- lab-spring2017. docx	cptr2272-master- lab-spring2017. docx	csci1110-master- lab-spring2017. docx
DScIS- application.pdf	Preuss_vehicle_ use_mstate.pdf	small_vm.txt	snuffy02.txt	spring2017.ics

7 Folders, 11 Files (2.0 MiB) | 1.1 GiB free

The complete path to the USB drive is now shown.

- Devices
- 28.0 GiB Hard Drive
 - 10.0 GiB Hard Drive
 - MSCTC

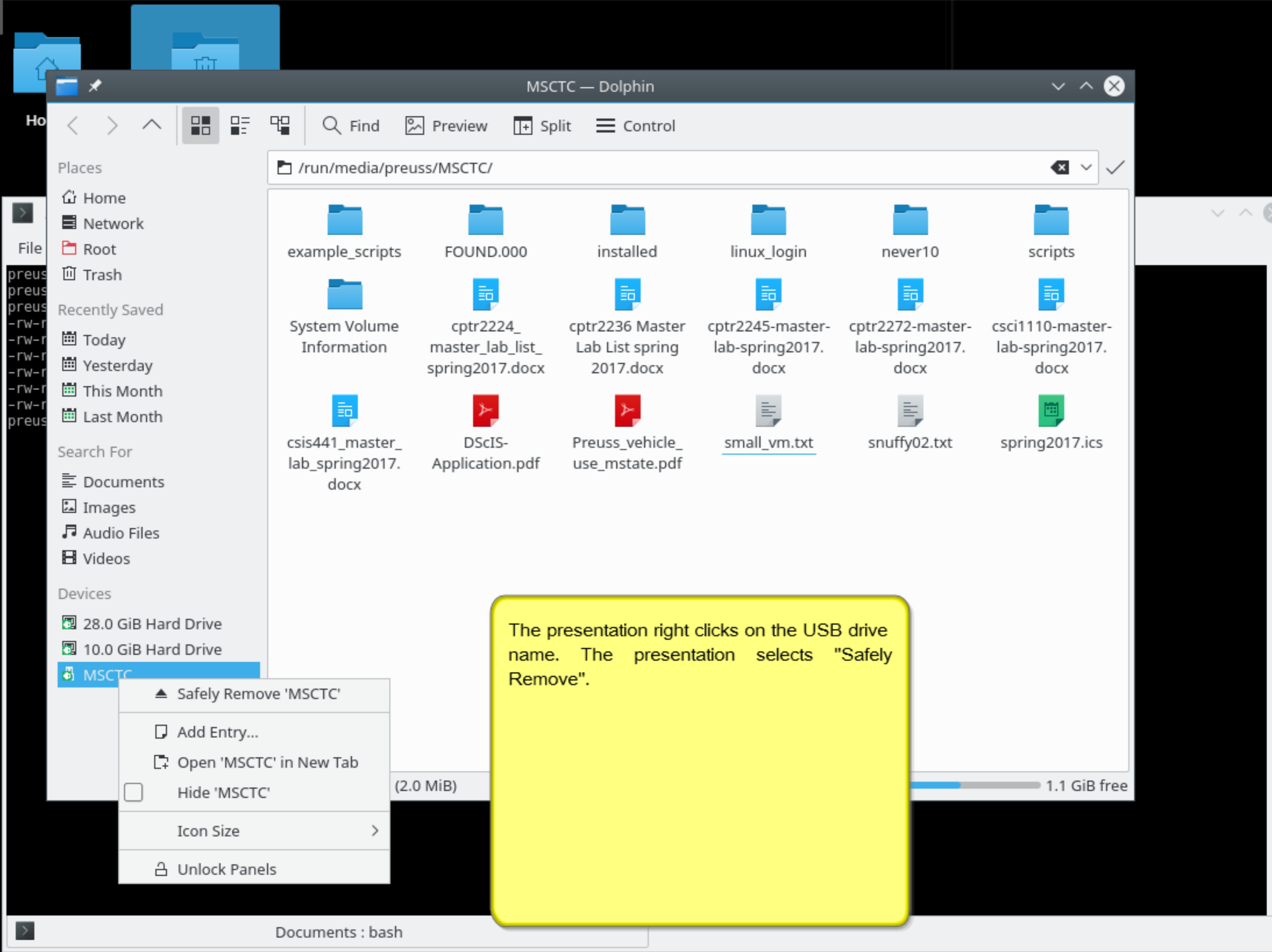


```
Documents : bash — Konsole
File Edit View Bookmarks Settings Help
preuss@opensuse-s2017:~> cd Documents/
preuss@opensuse-s2017:~/Documents> cp /run/media/preuss/MSCTC/*.docx ~/Documents/
preuss@opensuse-s2017:~/Documents> ls -l ~/Documents/*.docx
-rw-r--r-- 1 preuss users 22269 Apr 25 15:11 /home/preuss/Documents/cptr2224_master_lab_list_spring2017.docx
-rw-r--r-- 1 preuss users 27796 Apr 25 15:11 /home/preuss/Documents/cptr2236 Master Lab List spring 2017.docx
-rw-r--r-- 1 preuss users 24098 Apr 25 15:11 /home/preuss/Documents/cptr2245-master-lab-spring2017.docx
-rw-r--r-- 1 preuss users 32101 Apr 25 15:11 /home/preuss/Documents/cptr2272-master-lab-spring2017.docx
-rw-r--r-- 1 preuss users 26892 Apr 25 15:11 /home/preuss/Documents/csc1110-master-lab-spring2017.docx
-rw-r--r-- 1 preuss users 27815 Apr 25 15:11 /home/preuss/Documents/csis441_master_lab_spring2017.docx
preuss@opensuse-s2017:~/Documents>
```

The presentation opens a terminal or command prompt window.

The copy command shown copies all the files ending in "docx" from the USB drive to the home directory "Documents" folder.

The presentation then checks the copy.



MSCTC — Dolphin

Find Preview Split Control

/run/media/preuss/MSCTC/

- example_scripts
- FOUND.000
- installed
- linux_login
- never10
- scripts
- System Volume Information
- cptr2224_master_lab_list_spring2017.docx
- cptr2236 Master Lab List spring 2017.docx
- cptr2245-master-lab-spring2017.docx
- cptr2272-master-lab-spring2017.docx
- csci1110-master-lab-spring2017.docx
- csis441_master_lab_spring2017.docx
- DScIS-Application.pdf
- Preuss_vehicle_use_mstate.pdf
- small_vm.txt
- snuffy02.txt
- spring2017.ics

Places

- Home
- Network
- Root
- Trash

Recently Saved

- Today
- Yesterday
- This Month
- Last Month

Search For

- Documents
- Images
- Audio Files
- Videos

Devices

- 28.0 GiB Hard Drive
- 10.0 GiB Hard Drive
- MSCTC

- ▲ Safely Remove 'MSCTC'
- Add Entry...
- Open 'MSCTC' in New Tab
- Hide 'MSCTC'
- Icon Size >
- Unlock Panels

(2.0 MiB)

1.1 GiB free

The presentation right clicks on the USB drive name. The presentation selects "Safely Remove".

Documents : bash

MSCTC — Dolphin

Find Preview Split Control

/run/media/preuss/MSCTC/

Places: Home, Network, Root, Trash, Recently Saved, Today, Yesterday, This Month, Last Month

Search For: Documents, Images, Audio Files, Videos

Devices: 28.0 GiB Hard Drive, 10.0 GiB Hard Drive, MSCTC

The USB drive is now disconnected from OpenSUSE. The USB drive may now be removed from the physical machine.

Device Notifier

Storage Volume

MSCTC
This device can now be safely removed.