

OpenSUSE CIFS/SMB client connection

This presentation shows how to connect to a Window share using Konqueror and the command prompt.

Hardware/Software in this presentation

Operating System: OpenSUSE Leap 42.2 (M State Moorhead spring 2017 version)

Operating System: Windows 10 Anniversary Update

Preuss

4/25/2017



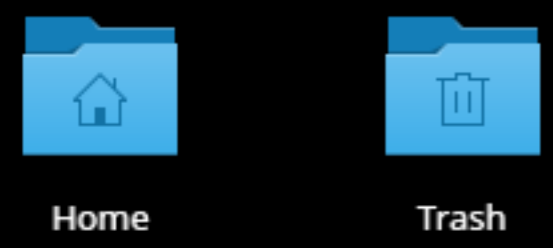
Home



Trash

The presentation logs into Linux.





Recent Applications

Recent Documents

Development

Games

Graphics

Internet

Multimedia

Office

Settings

System

Utilities

Power / Session

Search...

Akregator

Cloud Storage Manager

Contact Print Theme Editor

Contact Theme Editor

Firefox

KMail Header Theme Editor

KMail

KNetAttach

Konqueror

Konversation

Kopete

KVpnc

Sieve Editor

Smb4K

The presentation launches Konqueror.



Konqueror

Be free.

Konqueror is a web browser, file manager and universal document viewer.

[Starting Points](#) · [Introduction](#) · [Tips](#) · [Specifications](#)

 **Home Folder**
Your personal files

 **Trash**
Browse and rest

 **Network Folders**
Shared files and folders

 **Bookmarks**
Quick access to

 **Next: An Introduction to Konqueror**

Konqueror is successfully started.



Recycle Bin

The share is successfully setup on Windows 10.

Documents

File Home Share View

Documents

Search Documents

name	Date modified	Type	Size
share01	4/25/2017 12:28 PM	File folder	

share01 Properties

General Sharing Security Previous Versions Customize

Network File and Folder Sharing

share01
Shared

Network Path:
\\HOST01\share01

Share...

Advanced Sharing

Set custom permissions, create multiple shares, and set other advanced sharing options.

Advanced Sharing...

Password Protection

People must have a user account and password for this computer to access shared folders.

To change this setting, use the [Network and Sharing Center](#).

OK Cancel Apply

Network

1 item 1 item selected



Konqueror


Be free.

Konqueror is a web browser, file manager and universal document viewer.

[Starting Points](#) · [Introduction](#) · [Tips](#) · [Specifications](#)

 **Home Folder**
Your personal files

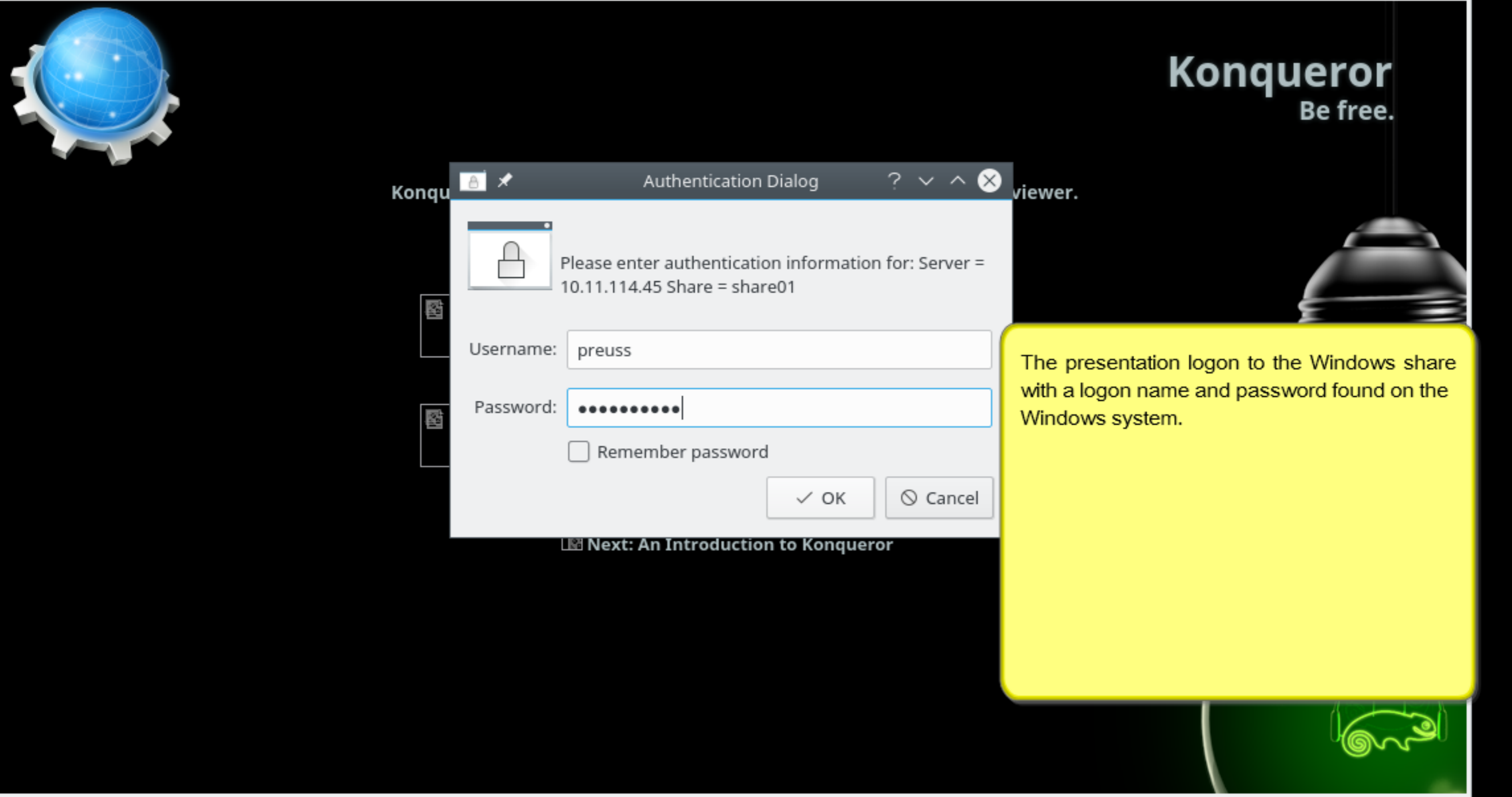
 **Network Folders**
Shared files and folders

 **Trash**
Deleted files

 **Bookmarks**
Quick access

 **Next: An Introduction to Konqueror**

Since name broadcasting is disabled on this network. The presentation uses the IP address of the server instead of the name.



Authentication Dialog

Please enter authentication information for: Server = 10.11.114.45 Share = share01

Username: preuss

Password: [Masked]

Remember password

OK Cancel

The presentation logs on to the Windows share with a logon name and password found on the Windows system.

example_scripts scripts02

The presentation is successfully connected to the Windows share. The folders shown are on the Windows system.

smb://preuss@10.11.114.45/share01 - Konqueror

File Edit View Go Bookmarks Tools Settings Window Help

< > ^ v [Icons] [Address Bar: smb://preuss@10.11.114.45/share01] [Search: Google]

example_scripts scripts02

preuss — Dolphin

< > ^ [Icons] Find Preview Split Control

Places > Home

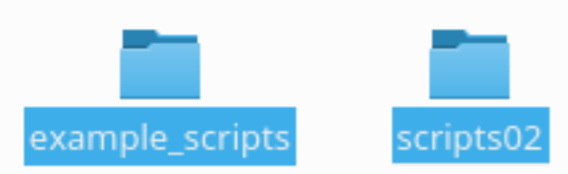
- Home
- Network
- Root

bin	Desktop	Documents	Downloads	GNUstep	Music
Pictures	Public	public_html	setup	Templates	Videos

28.0 GiB Hard Drive
10.0 GiB Hard Drive

12 Folders 7.7 GiB free

The presentation launches Dolphin on OpenSUSE.



The presentation drags the icons on Konqueror to Dolphin. The presentation selects "Copy Here" to copy the files from Windows to OpenSUSE.

2 Folders selected

- > Move Here Shift
- 📄 Copy Here Ctrl
- 🔗 Link Here Ctrl+Shift
- ⊘ Cancel Esc

12 Folders

[Progress bar] 7.7 GiB free

smb://preuss@10.11.114.45/share01 - Konqueror

File Edit View Go Bookmarks Tools Settings Window Help

< > ^ v [Icons] smb://preuss@10.11.114.45/share01 Google

example_scripts scripts02

preuss — Dolphin

< > ^ [Icons] Find Preview Split Control

Places > Home

- Home
- Network
- Root
- Trash

Recently Saved

- Today
- Yesterday
- This Month

bin Desktop Documents Downloads example_scripts GNUstep

Music Pictures Public public_html scripts02 setup

Templates Videos

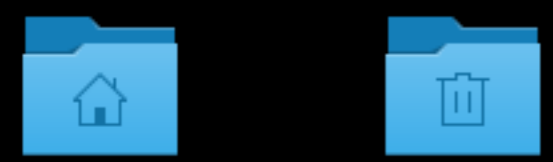
The files are successfully copied to OpenSUSE. This is shown in Dolphin.

Copying: Finished

/home/preuss/scripts02/5TSSSISU_SQL_Server_2012.pdf

Open...

14 Folders 7.7 GiB free



preuss : bash — Konsole

File Edit View Bookmarks Settings Help

```
preuss@opensuse-s2017:~> █
```

The presentation launches the Konsole in OpenSUSE.

preuss : bash



Downloads : bash — Konsole

File Edit View Bookmarks Settings Help

```
preuss@opensus-s2017:~> cd Downloads/  
preuss@opensus-s2017:~/Downloads> █
```

The presentation changes directories. The presentation wants the new files downloaded in this directory on OpenSUSE.

Downloads : bash



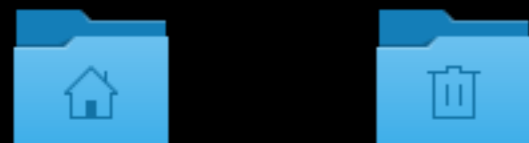
Downloads : smbclient — Konsole

File Edit View Bookmarks Settings Help

```
preuss@opensus-s2017:~> cd Downloads/  
preuss@opensus-s2017:~/Downloads> smbclient //10.11.114.45/share01 -U preuss  
Enter preuss's password: █
```

The presentation issues the "smbclient" command as shown. Once again, name broadcast is disabled on the network. The Windows 10 IP address is used instead of the server name.

Downloads : smbclient



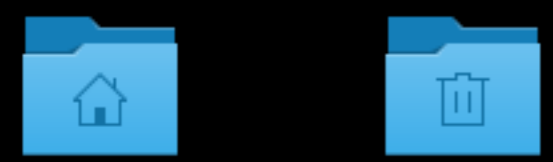
Downloads : smbclient — Konsole

File Edit View Bookmarks Settings Help

```
preuss@opensus-s2017:~> cd Downloads/  
preuss@opensus-s2017:~/Downloads> smbclient //10.11.114.45/share01 -U preuss  
Enter preuss's password:  
Domain=[HOST01] OS=[Windows 10 Pro 14393] Server=[Windows 10 Pro 6.3]  
smb: \>
```

The presentation is successfully connected to the Windows 10 share.

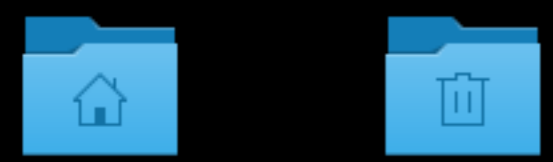
Downloads : smbclient



```

Downloads : smbclient — Konsole
File Edit View Bookmarks Settings Help
preuss@opensuse-s2017:~> cd Downloads/
preuss@opensuse-s2017:~/Downloads> smbclient //10.11.114.45/share01 -U preuss
Enter preuss's password:
Domain=[HOST01] OS=[Windows 10 Pro 14393] Server=[Windows 10 Pro 6.3]
smb: \> help
?
blocksize      allinfo      altname      archive      backup
chown          cancel      case_sensitive cd            chmod
echo          close       del          dir          du
hardlink      exit        get          getfacl      geteas
link          help        history     iosize       lcd
mask         lock        lowercase   ls           l
mput         md          mget        mkdir        more
posix_encrypt newer       notify      open         posix
print        posix_open  posix_mkdir posix_rmdir  posix_unlink
queue       prompt    put         pwd          q
reget       quit      readlink   rd           recurse
setea      rename    reput      rm           rmdir
showacls   setea    setmode    scopy        stat
symlink   tar      tarmode    timeout     translate
unlock    volume   void       wdel        logon
listconnect showconnect tcon      tdis        tid
logoff   ..      !
smb: \>
    
```

The presentation issues the help command to get a list of available commands in the program "smbclient".



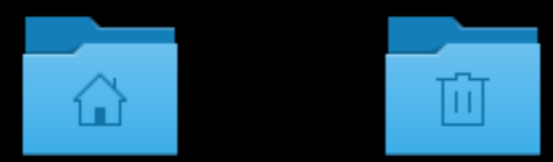
```

Downloads : smbclient — Konsole
File Edit View Bookmarks Settings Help
preuss@opensuse-s2017:~/Downloads> smbclient //10.11.114.45/share01 -U preuss
Enter preuss's password:
Domain=[HOST01] OS=[Windows 10 Pro 14393] Server=[Windows 10 Pro 6.3]
smb: \> help
?
blocksize      allinfo      altname      archive      backup
chown          cancel       case_sensitive cd            chmod
echo           close        del          dir           du
hardlink       exit         get          getfacl      geteas
link           help         history      iosize       lcd
mask           lock         lowercase   ls           l
mput           md           mget         mkdir        more
posix_encrypt newer        notify       open         posix
print          posix_open  posix_mkdir  posix_rmdir  posix_unlink
queue          prompt      put          pwd          q
reget         quit        readlink    rd           recurse
showacls      rename      reput       rm           rmdir
symlink       setea       setmode     scopy        stat
unlock        tar         tarmode     timeout      translate
listconnect   volume     vuid        wdel         logon
logoff        showconnect tcon        tdis        tid
smb: \> help mget
HELP mget:
    <mask> get all the matching files

smb: \> help recurse
HELP recurse:
    toggle directory recursion for mget and mput

smb: \> █
    
```

The presentation issues specific help commands to learn more about selected "smbclient" commands.



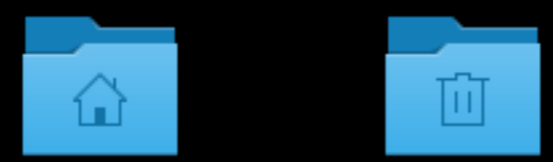
```

Downloads : smbclient — Konsole
File Edit View Bookmarks Settings Help
preuss@opensuse-s2017:~/Downloads> smbclient //10.11.114.45/share01 -U preuss
Enter preuss's password:
Domain=[HOST01] OS=[Windows 10 Pro 14393] Server=[Windows 10 Pro 6.3]
smb: \> help
?
blocksize      allinfo      altname      archive      backup
chown          cancel       case_sensitive cd            chmod
echo           close        del          dir           du
hardlink       exit         get          getfacl      geteas
link           help         history      iosize       lcd
mask           lock         lowercase   ls           l
mput           md           mget        mkdir        more
posix_encrypt newer        notify       open         posix
print          posix_open  posix_mkdir  posix_rmdir  posix_unlink
queue          prompt      put          pwd          q
reget         quit        readlink    rd           recurse
showacls       rename      reput        rm           rmdir
symlink        setea       setmode     scopy        stat
unlock         tar         tarmode     timeout      translate
listconnect    volume     void        wdel         logon
logoff         showconnect tcon        tdis        tid
smb: \> help mget
HELP mget:
    <mask> get all the matching files

smb: \> help recurse
HELP recurse:
    toggle directory recursion for mget and mput

smb: \> recurse
smb: \> mget *
    
```

The presentation issues the "recurse" command to toggle recursion. The presentation issues the "mget" command to copy folders/files from Windows.



```

Downloads : smbclient — Konsole
File Edit View Bookmarks Settings Help
preuss@opensuse-s2017:~/Downloads> smbclient //10.11.114.45/share01 -U preuss
Enter preuss's password:
Domain=[HOST01] OS=[Windows 10 Pro 14393] Server=[Windows 10 Pro 6.3]
smb: \> help
?
blocksize      allinfo      altname      archive      backup
chown          cancel       case_sensitive cd            chmod
echo          close        del          dir          du
hardlink       exit         get          getfacl      geteas
link           help         history      iosize       lcd
mask           lock         lowercase   ls           l
mput           md           mget         mkdir        more
posix_encrypt newer        notify       open         posix
print          posix_open  posix_mkdir  posix_rmdir  posix_unlink
queue          prompt      put          pwd          q
reget         rename      readlink    rd           recurse
showacls      setea       reput        rm           rmdir
symlink       tar         tarmode     scopy        stat
unlock        volume      void         wdel        translate
listconnect   showconnect tcon        tdis        logon
logoff        ..          !
smb: \> help mget
HELP mget:
    <mask> get all the matching files

smb: \> help recurse
HELP recurse:
    toggle directory recursion for mget and mput

smb: \> recurse
smb: \> mget *
Get directory example_scripts? y
    
```

The presentation answers "y" to each file and folder to copy.

The presentation really should have looked at the prompt command.



Downloads : smbclient — Konsole

File Edit View Bookmarks Settings Help

```
getting file \scripts02\05_script.sh of size 212 as 05_script.sh (207.0 KiloBytes/sec) (average 215.5 KiloBytes/sec)
Get file 06_script.sh? y
getting file \scripts02\06_script.sh of size 351 as 06_script.sh (342.7 KiloBytes/sec) (average 217.5 KiloBytes/sec)
Get file 07_script.sh? y
getting file \scripts02\07_script.sh of size 301 as 07_script.sh (293.9 KiloBytes/sec) (average
Get file 08_script.sh? y
getting file \scripts02\08_script.sh of size 188 as 08_script.sh (183.6 KiloBytes/sec) (average
Get file 09_script.sh? y
getting file \scripts02\09_script.sh of size 346 as 09_script.sh (337.9 KiloBytes/sec) (average
Get file 10_script.sh? y
getting file \scripts02\10_script.sh of size 288 as 10_script.sh (281.2 KiloBytes/sec) (average
Get file 11_script.sh? y
getting file \scripts02\11_script.sh of size 375 as 11_script.sh (366.2 KiloBytes/sec) (average
Get file 12_script.sh? y
getting file \scripts02\12_script.sh of size 447 as 12_script.sh (436.5 KiloBytes/sec) (average
Get file 13_script.sh? y
getting file \scripts02\13_script.sh of size 255 as 13_script.sh (83.0 KiloBytes/sec) (average
Get file 14_script.sh? y
getting file \scripts02\14_script.sh of size 114 as 14_script.sh (111.3 KiloBytes/sec) (average
Get file 15_script.sh? y
getting file \scripts02\15_script.sh of size 490 as 15_script.sh (239.2 KiloBytes/sec) (average
Get file 16_script.sh? y
getting file \scripts02\16_script.sh of size 663 as 16_script.sh (323.7 KiloBytes/sec) (average
Get file 17_script.sh? y
getting file \scripts02\17_script.sh of size 192 as 17_script.sh (187.5 KiloBytes/sec) (average 221.4 KiloBytes/sec)
Get file 18_script.sh? y
getting file \scripts02\18_script.sh of size 791 as 18_script.sh (772.4 KiloBytes/sec) (average 228.2 KiloBytes/sec)
Get file 19_script.sh? y
getting file \scripts02\19_script.sh of size 857 as 19_script.sh (836.8 KiloBytes/sec) (average 235.6 KiloBytes/sec)
Get file 5TSSISISU_SQL_Server_2012.pdf? y
getting file \scripts02\5TSSISISU_SQL_Server_2012.pdf of size 675382 as 5TSSISISU_SQL_Server_2012.pdf (131908.0 KiloBytes/sec) (average 7803.1 KiloBytes/sec)
)
Get file cron_demo.sh? y
getting file \scripts02\cron_demo.sh of size 181 as cron_demo.sh (88.4 KiloBytes/sec) (average 7629.8 KiloBytes/sec)
Get file home_backup.sh? y
getting file \scripts02\home_backup.sh of size 1520 as home_backup.sh (742.2 KiloBytes/sec) (average 7478.4 KiloBytes/sec)
Get file home_list.txt? y
getting file \scripts02\home_list.txt of size 6458 as home_list.txt (6306.0 KiloBytes/sec) (average 7465.7 KiloBytes/sec)
smb: \> █
```

Once all the desired folders/files are copied, the presentation issues the command "exit" to leave the "smbclient" program.

The "exit" command is not shown.

Downloads : smbclient



Downloads : bash — Konsole

File Edit View Bookmarks Settings Help

```
preuss@opensus-s2017:~/Downloads> ls  
cutecom-0.22.0.tar.gz  example_scripts  iperf-3.1.3-source.tar.gz  ossec-hids-2.8.3.tar.gz  rhash-1.3.4-src.tar.gz  scripts02  
preuss@opensus-s2017:~/Downloads> █
```

The presentation successfully downloaded folders/files from Windows 10 as shown.

Downloads : bash