

## How To Install An Active Directory Printer On A Windows XP Active Directory Member

These slides show how to install a printer on Windows XP that is a member of Active Directory.

Preuss

9/27/2012

The example first logon is the administration account of XP before it joined the domain. This is in your documentation.

to Windows



© 1985-2001 Microsoft Corporation Microsoft


User name:

Password:

OK Cancel Options >>

The local computer name is listed in the Log on to: box.

o Windows



1985-2001 Corporation Microsoft

User name: student

Password: [ ]

Log on to: XP-LEGO-AD (this computer) [v]

Log on using dial-up connection

OK Cancel Shut Down... Options <<

- Recycle Bin
- LEGO mindstorms NXT 2.0
- Adobe Reader
- NXT 2.1 Data Logging
- NXT 2.1 Programming
- Robotics Engineeri...
- Robotics Engineeri...
- Lego Docs
- ROBOTC for LEGO MIND...
- Shortcut to newsid

**Control Panel**

File Edit View Favorites Tools Help

Back Forward Search Folders

Address Control Panel Go

Control Panel  
Switch to Category View

See Also  
Windows  
Help

Accessibility Options  
Add Hardware  
Add or Remov...  
Administrative Tools  
Automatic Updates  
Date and Time  
Display  
Game Controllers  
Internet Options  
Java  
Keyboard  
Power Options  
Printers and Faxes  
Regional and Language ...  
Scanners and Cameras  
Speech  
System  
Taskbar and Start Menu  
User Accounts  
CardSpace  
Firewall  
Network Set...

The example selects the Administrative Tools.

- Recycle Bin
- LEGO mindstorms NXT 2.0
- Adobe Reader X
- NXT 2.1 Data Logging
- NXT 2.1 Programming
- Robotics Engineeri...
- Robotics Engineeri...
- Lego Docs
- ROBOTC for LEGO MIND...
- Shortcut to newsid

**Administrative Tools**

File Edit View Favorites Tools Help

Back Forward Search Folders

Address Administrative Tools Go

**File and Folder Tasks**

- Rename this file
- Move this file
- Copy this file
- Publish this file to the Web
- E-mail this file

- Component Services Shortcut 2 KB
- Data Sources (ODBC) Shortcut 2 KB
- Local Security Policy Shortcut
- Microsoft .NET Framework 1.1
- Performance Shortcut 2 KB
- Computer Management Shortcut 2 KB**
- Event Viewer Shortcut 2 KB
- Microsoft .NET Framework 1.1 Configuration Shortcut

The example selects the Computer Management shortcut.

- Recycle Bin
- LEGO MINDSTORMS
- Adobe Reader X
- NXT 2.1 Data Logging
- NXT 2.1 Programming
- Robotics Engineeri...
- Robotics Engineeri...
- Lego Docs
- ROBOTC for LEGO MIND...
- Shortcut to newsid

### Computer Management

File Action View Window Help

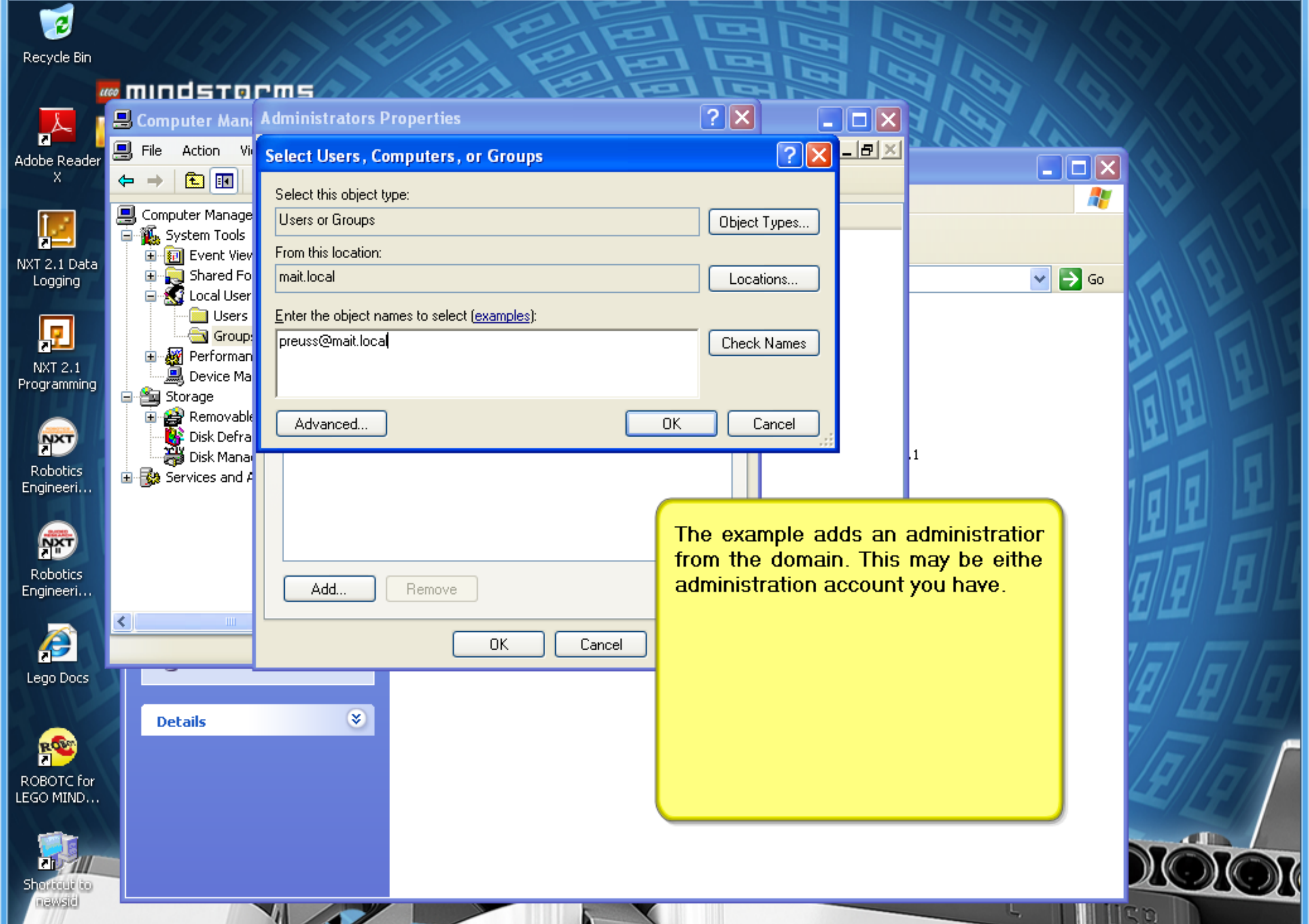
Computer Management (Local)

- System Tools
  - Event Viewer
  - Shared Folders
  - Local Users and Groups
    - Users
    - Groups
  - Performance Logs and Alerts
  - Device Manager
- Storage
  - Removable Storage
  - Disk Defragmenter
  - Disk Management
- Services and Applications

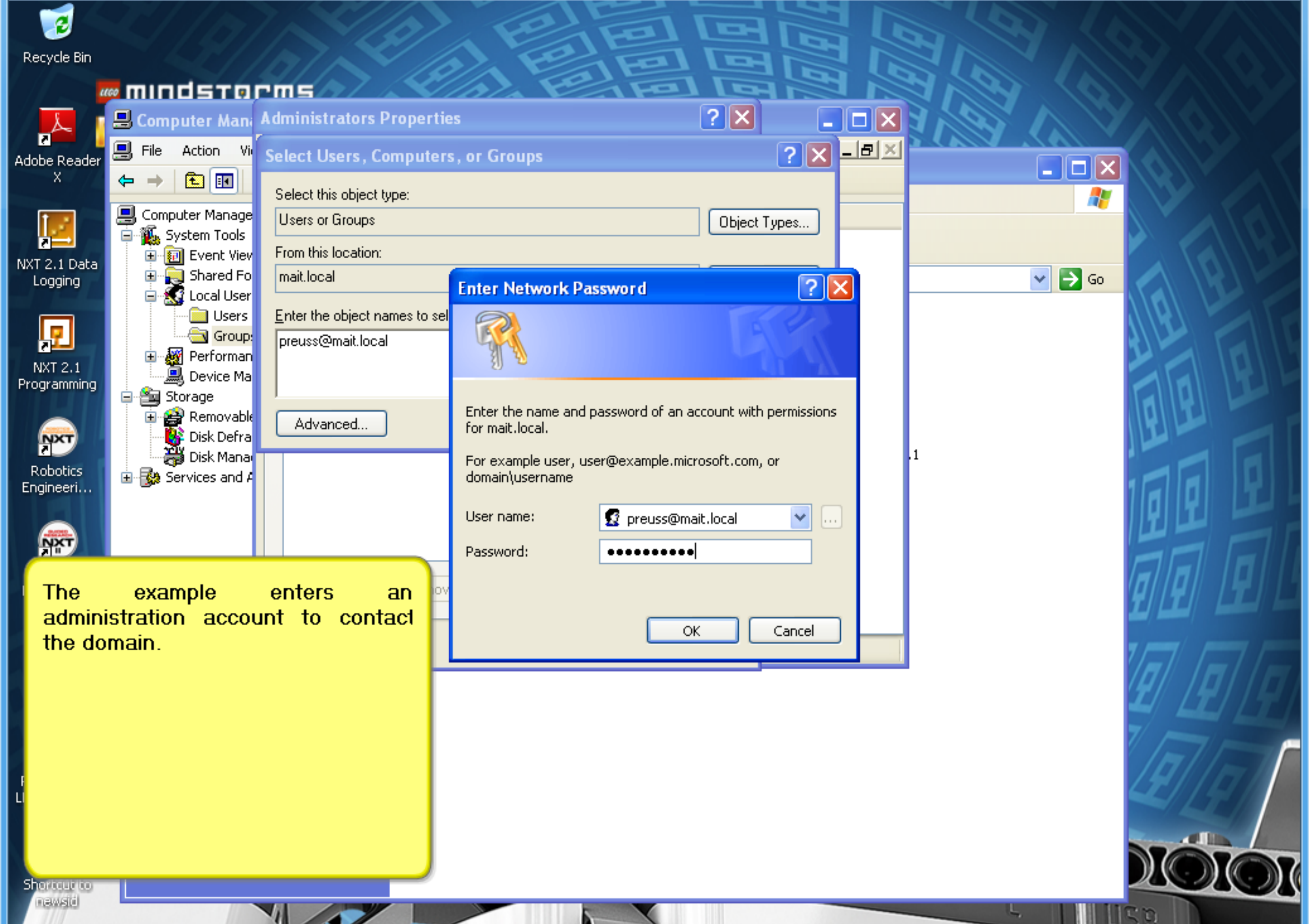
Name	Description
Administrators	Administrators have complete and u...
Backup Operators	Backup Operators can override secu...
Guests	Guests have the same access as me...
Network Configuration ...	Members in this group can have som...
Power Users	Power Users possess most administr...
Remote Desktop Users	Members in this group are granted t...
Replicator	Supports file replication in a domain
Users	Users are prevented from making ac...
HelpServicesGroup	Group for the Help and Support Center

The example selects Local Users and Groups | Groups | Administrators.

Details



The example adds an administrator from the domain. This may be either an administration account you have.



**Administrators Properties**

**Select Users, Computers, or Groups**

Select this object type:  
Users or Groups

From this location:  
mait.local

Enter the object names to select:  
preuss@mait.local

**Enter Network Password**

Enter the name and password of an account with permissions for mait.local.

For example user, user@example.microsoft.com, or domain\username

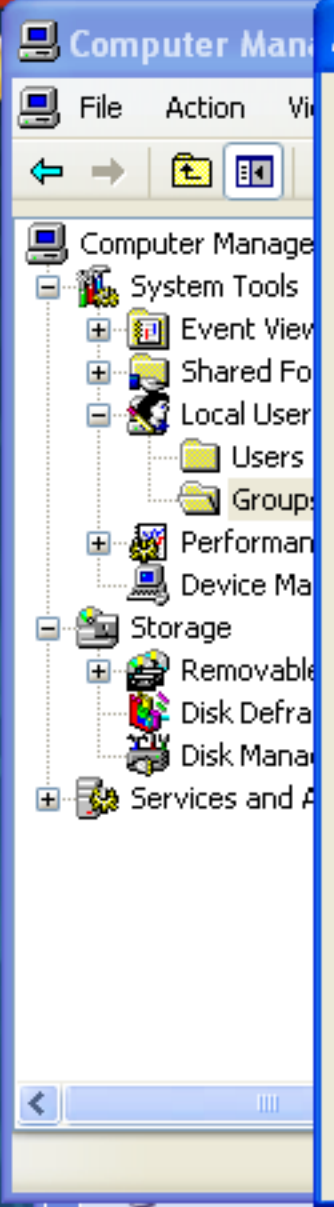
User name: preuss@mait.local

Password: [Masked]

OK Cancel

The example enters an administration account to contact the domain.





### Administrators Properties

**General**

Administrators

Description: mplete and unrestricted access to the computer/domain

Members:

- Administrator
- MAIT\Domain Admins
- MAIT\preuss (Preuss@mailto.local)
- Student

Buttons: Add... Remove

Buttons: OK Cancel Apply

The examples domain administration account is now listed as a local administrator.



**Log On to Windows**



Copyright © 1985-2001  
Microsoft Corporation

**User name:**

**Password:**

**Log on to:**

Log on using dial-up connection

The example logs off as local administrator. The example now logs on as the administration account from the domain.

Adobe Reader X  
NXT 2.1 Data Logging  
NXT 2.1 Programming  
Robotics Engineering...  
Robotics Engineering

### Printers and Faxes

File Edit View Favorites Tools Help

Back Forward Search Folders

Address Printers and Faxes Go

**Printer Tasks**

- Add a printer
- Set up faxing

**See Also**


- Troubleshoot printing
- Get help with printing

Microsoft XPS Document Writer  
0  
Ready

The example selects Printers and Faxes from the start menu.

- Adobe Reader
- NXT 2.1 Loggi
- NXT : Program
- Robot Engine
- Robot Engine

### Add Printer Wizard



## Welcome to the Add Printer Wizard

This wizard helps you install a printer or make printer connections.

**i** If you have a Plug and Play printer that connects through a USB port (or any other hot pluggable port, such as IEEE 1394, infrared, and so on), you do not need to use this wizard. Click Cancel to close the wizard, and then plug the printer's cable into your computer or point the printer toward your computer's infrared port, and turn the printer on. Windows will automatically install the printer for you.

To continue, click Next.

< Back   Next >   Cancel

[Navigation bar with icons and a Go button]

The example selects Add Printer. This starts the Add Printer Wizard.

- My Documents
- My Pictures
- My Computer

Details [Dropdown arrow]

- Adobe Reader
- NXT 2.1
- Loggi
- NXT : Program
- Robot Engine
- Robot Engine

### Add Printer Wizard

**Local or Network Printer**

The wizard needs to know which type of printer to set up.

Select the option that describes the printer you want to use:

- Local printer attached to this computer
  - Automatically detect and install my Plug and Play printer
- A network printer, or a printer attached to another computer

**i** To set up a network printer that is not attached to a print server, use the "Local printer" option.

< Back    Next >    Cancel

The printer is a network printer.

- My Documents
- My Pictures
- My Computer

Details



Adobe Reader



NXT 2.1  
Loggi



NXT  
Progran



Robot  
Engine



Robot  
Engine

### Add Printer Wizard

#### Specify a Printer

If you don't know the name or address of the printer, you can search for a printer that meets your needs.

What printer do you want to connect to?

- Find a printer in the directory
- Connect to this printer (or to browse for a printer, select this option and click Next):  
Name:   
Example: \\server\printer
- Connect to a printer on the Internet or on a home or office network:  
URL:   
Example: http://server/printers/myprinter/.printer

< Back   Next >   Cancel

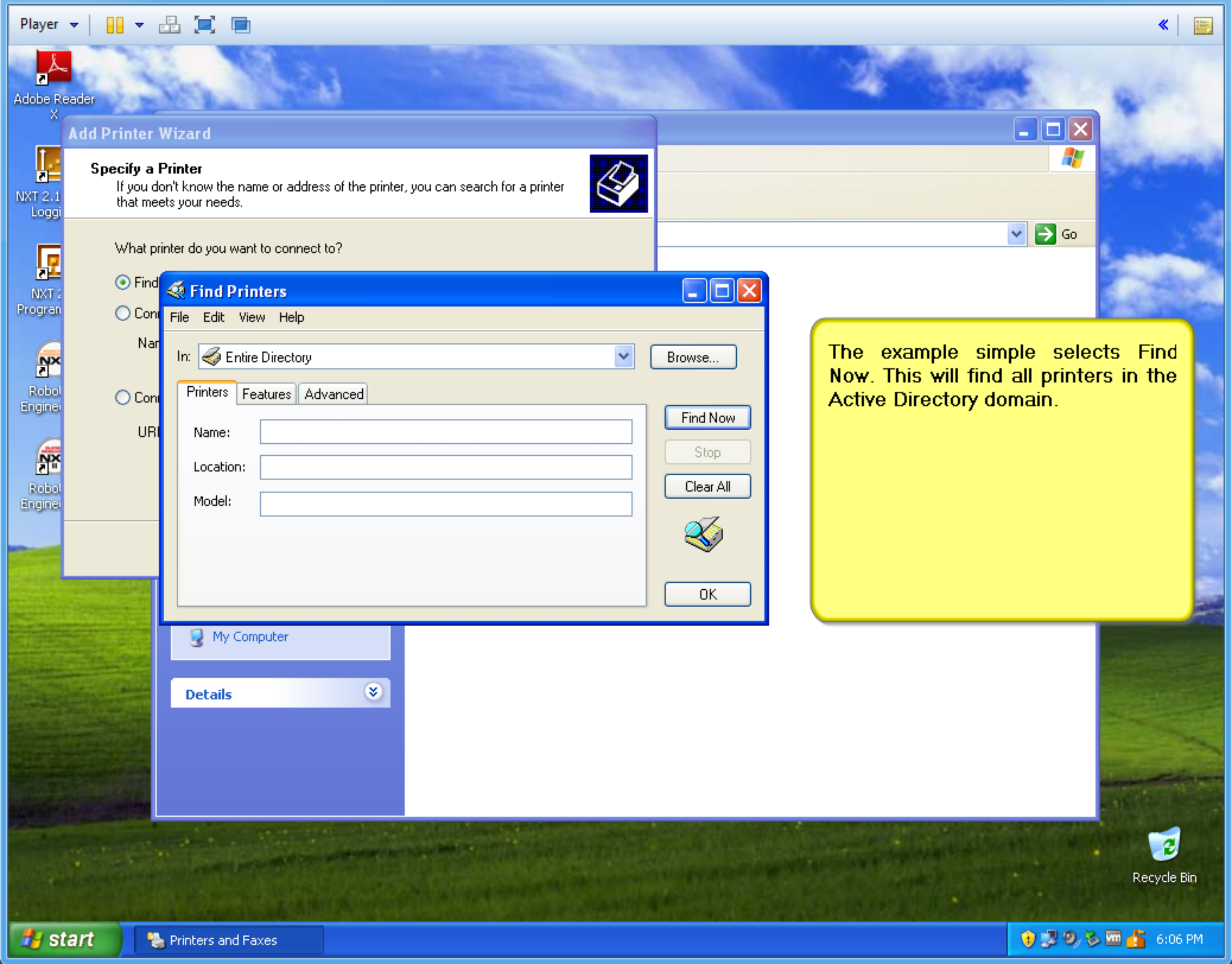
The example will make the computer find the printer in Active Directory. It is less typing for the example.

- My Documents
- My Pictures
- My Computer

Details



Recycle Bin



### Add Printer Wizard

**Specify a Printer**  
If you don't know the name or address of the printer, you can search for a printer that meets your needs.

What printer do you want to connect to?

- Find Printers
- Connect to a printer on the network
- Connect to a printer on my computer

### Find Printers

File Edit View Help

In:

Printers Features Advanced

Name:

Location:

Model:

The example simple selects Find Now. This will find all printers in the Active Directory domain.

- Adobe Reader
- NXT 2.1 Loggi
- NXT 2 Program
- Robot Engine
- Robot Engine

### Add Printer Wizard

**Specify a Printer**  
If you don't know the name or address of the printer, you can search for a printer that meets your needs.

What printer do you want to connect to?

- Find
- Connect to a printer that I already own
- Connect to a printer on the network

### Find Printers

File Edit View Help

In: Entire Directory [Browse...]

Printers | Features | Advanced

Name: [ ]

Location: [ ]

Model: [ ]

[Find Now] [Stop] [Clear All] [OK]

Name	Location	Model
printdevice	MSCTC Moorhead B150	HP Universal Printing P5

1 item(s) found

The example selects a printer from the list of found printers. The example selects OK.



- Adobe Reader
- NXT 2.1 Loggi
- NXT : Program
- Robot Engine
- Robot Engine

### Add Printer Wizard

**Default Printer**  
Your computer will always send documents to the default printer unless you specify otherwise.

Do you want to use this printer as the default printer?

Yes  
 No

< Back   Next >   Cancel

[Close] [Max] [Min]

[Printer Icon]

[Dropdown] [Go]




The example is making the Active Directory printer the default. The choice is yours.

- My Documents
  - My Pictures
  - My Computer
- Details [Dropdown]



- Adobe Reader
- NXT 2.1 Loggi
- NXT : Program
- Robot Engine
- Robot Engine

### Add Printer Wizard




#### Completing the Add Printer Wizard

You have successfully completed the Add Printer Wizard. You specified the following printer settings:

Name: printdevice on Chile  
Default: Yes  
Location: MSCTC Moorhead B150  
Comment: This is the lab printer.

To close this wizard, click Finish.

< Back   Finish   Cancel



printdevice on Chile

0

Go

The example selects Finish to complete installation.

- My Documents
- My Pictures
- My Computer

Details



- Adobe Reader X
- NXT 2.1 Data Logging
- NXT 2.1 Programming
- Robotics Engineeri...
- Robotics Engineeri...

### Printers and Faxes

File Edit View Favorites Tools Help

Back Forward Refresh Search Folders

Address Printers and Faxes Go

#### Printer Tasks

- Add a printer
- Set up faxing

#### See Also

- Troubleshoot printing
- Get help with printing

#### Other Places

- Control Panel
- Scanners and Cameras
- My Documents
- My Pictures
- My Computer

#### Details

	Microsoft XPS Document Writer 0 Ready		printdevice on Chile 0 Ready
--	---	--	------------------------------------

The printer is ready for use.





**Document - WordPad**

File Edit View Insert Format Help

Arial 10 Western

This is the XP AD test 1

**Print**

General

Select Printer

- Add Printer
- Microsoft XPS Document ...
- printdevice on Chile**

Status: Ready  Print to file Preferences

Location: MSCTC Moorhead B150 Find Printer...

Comment: This is the lab printer.

Page Range

All  Selection  Current Page

Pages: 1-65535

Enter either a single page number or a single page range. For example, 5-12

Number of copies: 1

Collate

Print Cancel Apply

The example is using WordPad to test the printer.

The test was successful.

For Help, press F1

