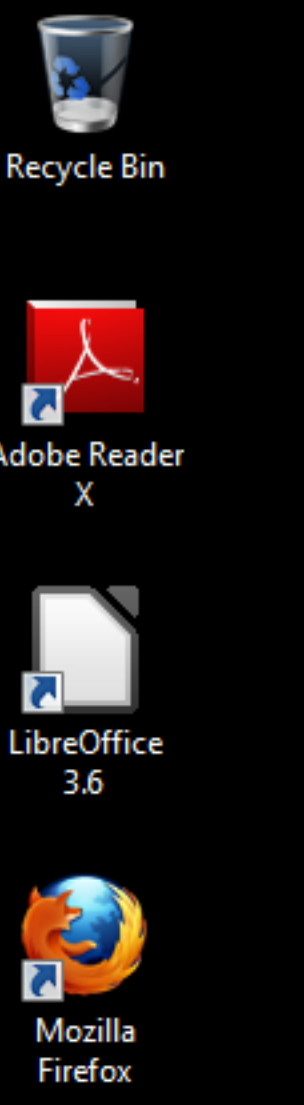


## How To Install Programs On Active Directory Servers.

These slides show how to install a program without an install program and another program with an install program on the class Active Directory servers.

Preuss

9/27/2012



The example is using Windows 7 client that is not a member of the Active Directory domain. This is easier than a Windows domain member.



Recycle Bin



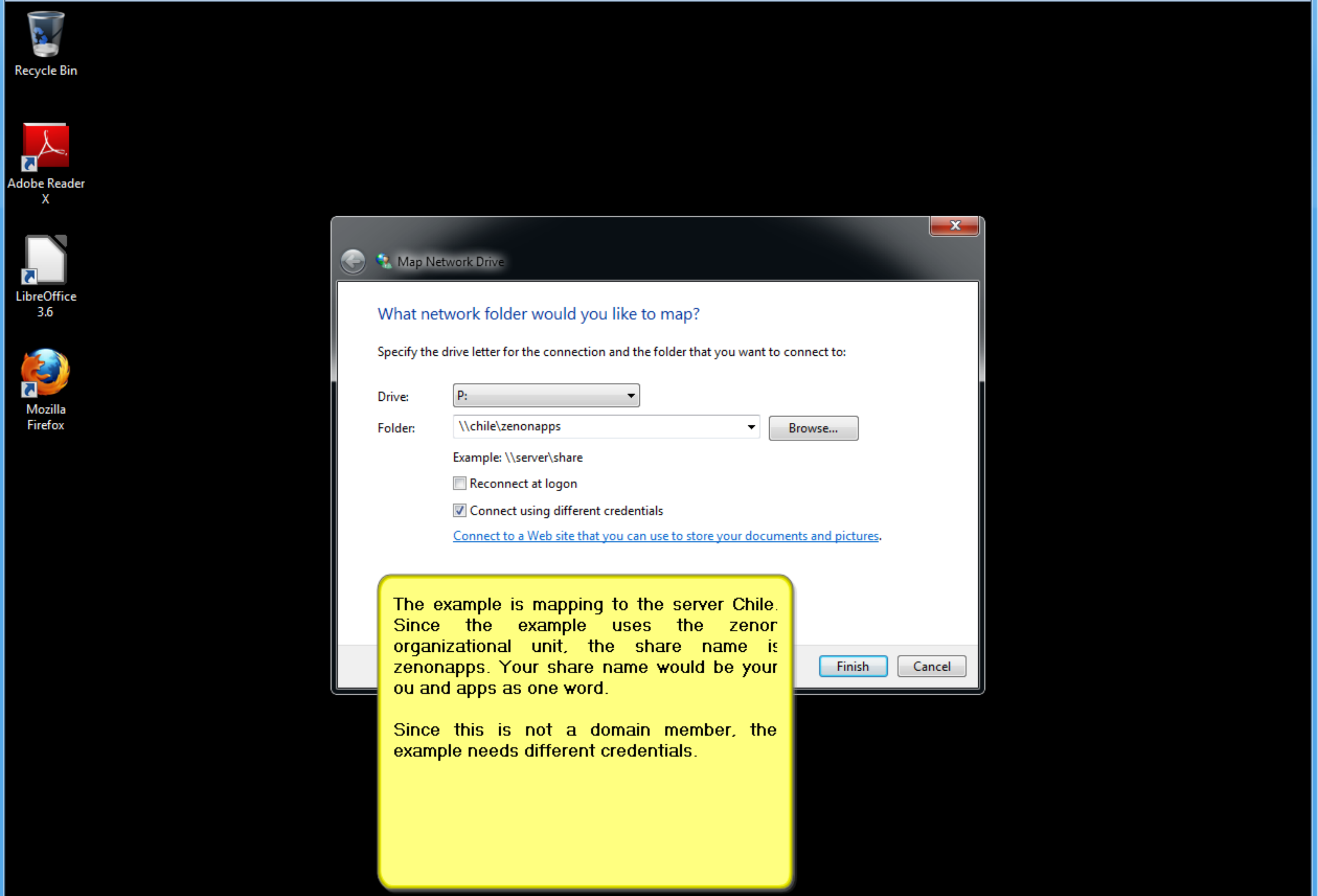
Adobe Reader X

The example is mapping a drive on a server.

- Mozilla Firefox
  - Notepad
  - Remote Desktop Connection
  - LibreOffice Writer
  - Getting Started
  - Connect to a Projector
  - Calculator
  - Sticky Notes
  - Snipping Tool
  - Paint
  - XPS Viewer
  - Windows Fax and Scan
  - Magnifier
  - LibreOffice 3.6
  - Computer Management
  - Cisco AnyConnect VPN Client
- Search programs and files

- preuss
- Docum
- Pictur
- Musio
- Videos
- Downloads
- Games
- Computer
- Netw
- Contr
- Devic
- Defau
- Admi
- Help and Support
- Run...
- Shut down

- Open
- Manage
- Map network drive...
- Disconnect network drive...
- Show on Desktop
- Rename
- Properties



**Map Network Drive**

What network folder would you like to map?

Specify the drive letter for the connection and the folder that you want to connect to:

Drive: P: [Dropdown]

Folder: \\chile\zenonapps [Dropdown] [Browse...]

Example: \\server\share

Reconnect at logon

Connect using different credentials

[Connect to a Web site that you can use to store your documents and pictures.](#)

[Finish] [Cancel]

The example is mapping to the server Chile. Since the example uses the zenon organizational unit, the share name is zenonapps. Your share name would be your ou and apps as one word.

Since this is not a domain member, the example needs different credentials.

Recycle Bin

Adobe Reader X

LibreOffice 3.6

Mozilla Firefox

Windows Security

### Enter Network Password

Enter your password to connect to: chile

Domain: mait.local  
 Remember my credentials

OK Cancel

...t to connect to:

Browse...

Example: \\server\share

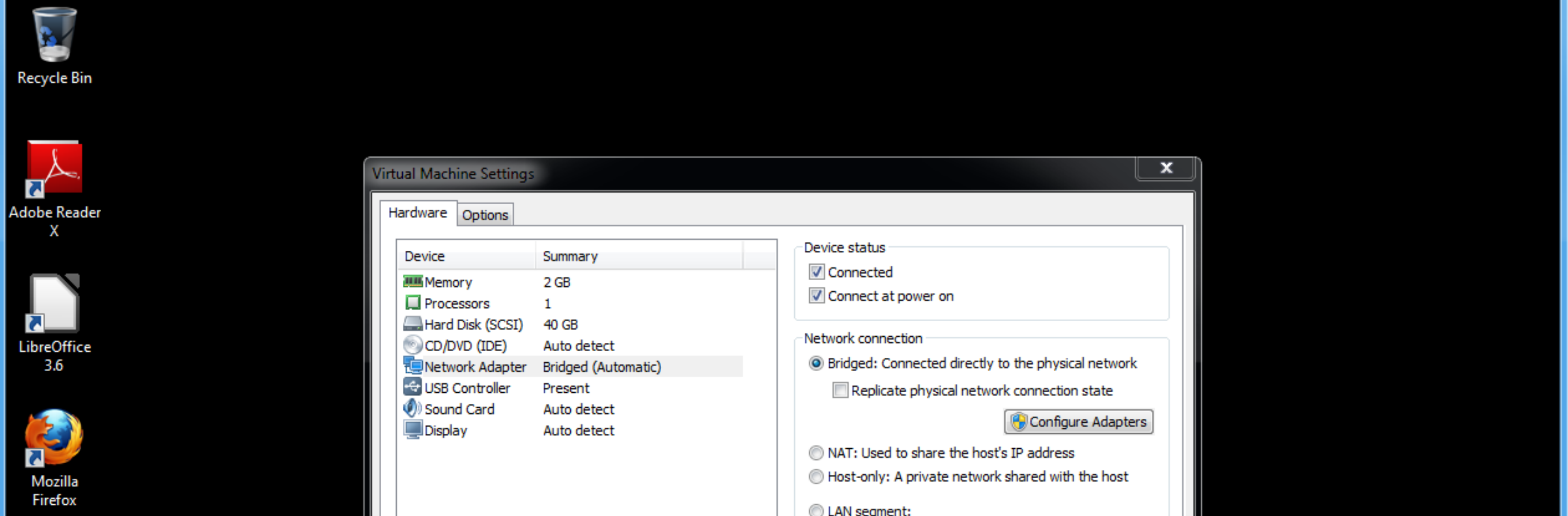
Reconnect at logon

Connect using different credentials

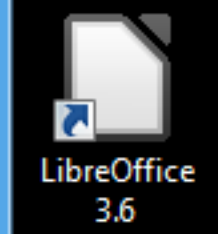
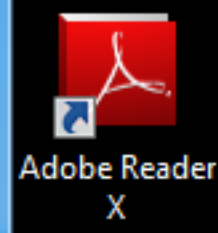
[Connect to a Web site that you can use to store your documents and pictures.](#)

Finish Cancel

The example provides the credentials.



This is just a virtualization note. The bridged mode would be the fastest for connection.



Computer > zenonapps (\\chile) (P:)

Search zenonapps (\\chile) (P:)

Organize | New folder

| Name                  | Date modified | Type | Size |
|-----------------------|---------------|------|------|
| This folder is empty. |               |      |      |

0 items | Offline | Offline av

This is a successful mapping.

File Explorer window showing the path: **preuss > Downloads > pong > malato-pong**. Search: *malato-pong*

Organize | Include in library | Share with | Burn | New folder

| Name                        | Date modified      | Type          | Size     |
|-----------------------------|--------------------|---------------|----------|
| Files                       | 8/19/2005 12:03 PM | File folder   |          |
| snd                         | 8/19/2005 12:03 PM | File folder   |          |
| src                         | 8/19/2005 12:03 PM | File folder   |          |
| ## Ler ##.txt               | 8/9/2005 6:22 PM   | Text Document | 1 KB     |
| keys.txt                    | 8/11/2005 11:55 PM | Text Document | 1 KB     |
| malatoPong (FullScreen).exe | 9/5/2005 12:23 PM  | Application   | 1,772 KB |
| malatoPong.exe              | 9/5/2005 12:22 PM  | Application   | 1,772 KB |

7 items

File Explorer window showing the path: **Search zenonapps (\chile) (P:)**. Search: *zenonapps*

| Date modified         | Type | Size |
|-----------------------|------|------|
| This folder is empty. |      |      |

0 items    Offline status: Online  
Offline availability: Not available



Player | [Icons]

preuss > Downloads > pong > malato-pong

Search malato-pong

Organize | Include in library | Share with | Burn | New folder

| Name                        | Date modified      | Type          | Size     |
|-----------------------------|--------------------|---------------|----------|
| Files                       | 8/19/2005 12:03 PM | File folder   |          |
| snd                         | 8/19/2005 12:03 PM | File folder   |          |
| src                         | 8/19/2005 12:03 PM | File folder   |          |
| ## Ler ##.txt               | 8/9/2005 6:22 PM   | Text Document | 1 KB     |
| keys.txt                    | 8/11/2005 11:55 PM | Text Document | 1 KB     |
| malatoPong (FullScreen).exe | 9/5/2005 12:23 PM  | Application   | 1,772 KB |
| malatoPong.exe              |                    |               |          |

7 items

Computer > zenonapps (\\chile) (P:)

Search zenonapps (\\chile) (P:)

Organize | Open | Burn | New folder

| Name | Date modified     | Type        | Size |
|------|-------------------|-------------|------|
| pong | 9/27/2012 4:08 PM | File folder |      |

Date modified: 9/27/2012 4:08 PM    Offline status: Online

File folder    Offline availability: Not available

The example creates a folder on the share fo pong.

File Explorer window showing the path: `preuss > Downloads > pong > malato-pong`. The search bar contains `Search malato-pong`.

| Name                        | Date modified      | Type          | Size     |
|-----------------------------|--------------------|---------------|----------|
| Files                       | 8/19/2005 12:03 PM | File folder   |          |
| snd                         | 8/19/2005 12:03 PM | File folder   |          |
| src                         | 8/19/2005 12:03 PM | File folder   |          |
| ## Ler ##.txt               | 8/9/2005 6:22 PM   | Text Document | 1 KB     |
| keys.txt                    | 8/11/2005 11:55 PM | Text Document | 1 KB     |
| malatoPong (FullScreen).exe | 9/5/2005 12:23 PM  | Application   | 1,772 KB |
| malatoPong.exe              |                    |               |          |

File Explorer window showing the path: `Computer > zenonapps (\\chile) (P:) > pong`. The search bar contains `Search pong`.

| Name           | Date modified     | Type        | Size     |
|----------------|-------------------|-------------|----------|
| malatoPong.exe | 9/5/2005 12:22 PM | Application | 1,772 KB |

The example experimented with malatoPong.exe and found it does not need installation. The example copies malatoPong to the folder on the share.

malatoPong.exe Application

malatoPong.exe Date modified: 9/5/2005 12:22 PM Date created: 9/27/2012 4:09 PM  
Application Size: 1.72 MB Offline availability: Not available

File Explorer window showing the path: preuss > Downloads > pong > malato-pong

Search: malato-pong

Organize | Open | Share with | Burn | New folder

| Name                        | Date modified      | Type          | Size     |
|-----------------------------|--------------------|---------------|----------|
| Files                       | 8/19/2005 12:03 PM | File folder   |          |
| snd                         | 8/19/2005 12:03 PM | File folder   |          |
| src                         | 8/19/2005 12:03 PM | File folder   |          |
| ## Ler ##.txt               | 8/9/2005 6:22 PM   | Text Document | 1 KB     |
| keys.txt                    | 8/11/2005 11:55 PM | Text Document | 1 KB     |
| malatoPong (FullScreen).exe | 9/5/2005 12:23 PM  | Application   | 1,772 KB |
| malatoPong.exe              |                    |               |          |

Open File - Security Warning

**The publisher could not be verified. Are you sure you want to run this software?**

Name: P:\pong\malatoPong.exe  
Publisher: **Unknown Publisher**  
Type: Application  
From: P:\pong\malatoPong.exe

Run Cancel

This file does not have a valid digital signature that verifies its publisher. You should only run software from publishers you trust. [How can I decide what software to run?](#)

File Explorer window showing the path: pong

Search: pong

| Date modified     | Type        | Size     |
|-------------------|-------------|----------|
| 9/5/2005 12:22 PM | Application | 1,772 KB |

malatoPong.exe Date modified: 9/5/2005 12:22 PM Date created: 9/27/2012 4:09 PM  
Application Size: 1.72 MB Offline availability: Not available

Naturally the example tests the program as administrator. It should run.

Malato-Pong

MALATO-PONG

PLAY GAME WITH 1 OR 2 PLAYERS:  
PRESS 1 OR 2

malatoPong.exe  
Application

Date created: 9/27/2012 4:09 PM  
Offline availability: Not available

1,772 KB

This is success for pong.



**Computer**

Computer

Organize Properties System properties Uninstall or change a program Map network drive Open Control Panel

Favorites: Desktop, Downloads, Recent Places  
 Libraries: Documents, Music, Pictures, Videos  
 Computer: Local Disk (C:), Chile-Data (E:), A on TEMPLATE-WIN7, C on TEMPLATE-WIN7, D on TEMPLATE-WIN7, P on TEMPLATE-WIN7  
 Network

**Hard Disk Drives (2)**  
 Local Disk (C:) 20.9 GB free of 39.8 GB  
 Chile-Data (E:) 29.9 GB free of 29.9 GB

**Devices with Removable Storage (2)**  
 Floppy Disk Drive (A:) DVD Drive (D:)

**Other (4)**  
 A on TEMPLATE-WIN7 System Folder  
 C on TEMPLATE-WIN7 System Folder  
 D on TEMPLATE-WIN7 System Folder

Chile-Data (E:) Space used:   
 Local Disk Space free: 29.9 GB

The example uses Remote Desktop to connect to the server. On the server, the example goes to drive E:.



Recycl

Chile-Data (E:)

Computer > Chile-Data (E:)

Search Chile-Data (E:)

Organize | Open | Include in library | Share with | New folder

| Name  | Date modified     | Type        | Size |
|-------|-------------------|-------------|------|
| TLS   | 8/14/2012 2:43 PM | File folder |      |
| TOG   | 8/14/2012 2:43 PM | File folder |      |
| TPE   | 8/14/2012 2:43 PM | File folder |      |
| TRI   | 8/14/2012 2:43 PM | File folder |      |
| TUN   | 8/14/2012 2:43 PM | File folder |      |
| TUR   | 8/14/2012 2:43 PM | File folder |      |
| TUV   | 8/14/2012 2:43 PM | File folder |      |
| UAE   | 8/14/2012 2:43 PM | File folder |      |
| UGA   | 8/14/2012 2:43 PM | File folder |      |
| UKR   | 8/14/2012 2:43 PM | File folder |      |
| URU   | 8/14/2012 2:43 PM | File folder |      |
| USA   | 8/14/2012 2:43 PM | File folder |      |
| UZB   | 8/14/2012 2:43 PM | File folder |      |
| VAN   | 8/14/2012 2:43 PM | File folder |      |
| VEN   | 8/14/2012 2:43 PM | File folder |      |
| VIE   | 8/14/2012 2:43 PM | File folder |      |
| VIN   | 8/14/2012 2:43 PM | File folder |      |
| YEM   | 8/14/2012 2:43 PM | File folder |      |
| ZAM   | 8/14/2012 2:43 PM | File folder |      |
| Zenon | 8/14/2012 2:42 PM | File folder |      |

Zenon Date modified: 8/14/2012 2:42 PM  
File folder

The example goes to the organization uni name being used.



**Zenon**

Computer > Chile-Data (E:) > Zenon

Search Zenon

Organize | Open | Include in library | Share with | New folder

| Name | Date modified     | Type        | Size |
|------|-------------------|-------------|------|
| apps | 9/27/2012 4:08 PM | File folder |      |
| home | 9/27/2012 3:46 PM | File folder |      |

State: Shared  
 Shared with: MAIT\adZenon; Tim Preuss  
 File folder Date modified: 9/27/2012 4:08 PM

The example opens the apps folder.



apps

Computer > Chile-Data (E:) > Zenon > apps

Search apps

Organize | Open | Include in library | Share with | New folder

| Name | Date modified     | Type        | Size |
|------|-------------------|-------------|------|
| pong | 9/27/2012 4:09 PM | File folder |      |

Context menu for 'pong':

- Open
  - Open in new window
- Share with
- Restore previous versions
- Include in library
- Send to
- Cut
- Copy
- Create shortcut
- Delete
- Rename
- Properties

pong State: Shared Shared with: MAIT\adZenon  
File folder Date modified: 9/27/2012 4:09 PM

The example right clicks on the pong folder and selects Properties.





- Recycle Bin
- apps
- Computer
  - Chile-Data (E:)
    - Zenon
      - apps
- Libraries
  - Documents
  - Music
  - Pictures
  - Videos
- Computer
  - Local Disk (C:)
  - Chile-Data (E:)
  - A on TEMPLATE-WIN7
  - C on TEMPLATE-WIN7
  - D on TEMPLATE-WIN7
  - P on TEMPLATE-WIN7
- Network

| Name | Date modified     | Type        | Size |
|------|-------------------|-------------|------|
| pong | 9/27/2012 4:00 PM | File folder |      |

**pong Properties**

General | **Sharing** | Security | Previous Versions | Customize

Object name: E:\Zenon\apps\pong

Group or user names:

- CREATOR OWNER
- SYSTEM
- administration (MAIT\administration)
- Tim Preuss (Preuss@mait.local)

To change permissions, click Edit.

Permissions for CREATOR OWNER

| Permissions          | Allow                    | Deny                     |
|----------------------|--------------------------|--------------------------|
| Full control         | <input type="checkbox"/> | <input type="checkbox"/> |
| Modify               | <input type="checkbox"/> | <input type="checkbox"/> |
| Read & execute       | <input type="checkbox"/> | <input type="checkbox"/> |
| List folder contents | <input type="checkbox"/> | <input type="checkbox"/> |
| Read                 | <input type="checkbox"/> | <input type="checkbox"/> |
| Write                | <input type="checkbox"/> | <input type="checkbox"/> |

For special permissions or advanced settings, click Advanced.

[Learn about access control and permissions](#)

Using the security tab, the example may set the permissions for the program.

Naturally all of this is documented.

File Explorer window showing the path: `preuss > Downloads`. Search bar: `Search Downloads`.

| Name                          | Date modified      | Type        | Size |
|-------------------------------|--------------------|-------------|------|
| cpu-sim                       | 7/30/2012 7:53 PM  | File folder |      |
| crypttool                     | 7/30/2012 7:53 PM  | File folder |      |
| hash                          | 7/30/2012 7:53 PM  | File folder |      |
| keyfinder                     | 7/30/2012 7:53 PM  | File folder |      |
| pmg                           | 9/19/2012 10:24 AM | File folder |      |
| pong                          |                    |             |      |
| AngryBirdsInstaller_2.2.0.exe |                    |             |      |
| anyconnect-win-2.3.2016-web   |                    |             |      |
| anyconnect-win-2.3.2016-web   |                    |             |      |

File Explorer window showing the path: `Search zenonapps (\chile) (P:)`.

| Date modified     | Type        | Size |
|-------------------|-------------|------|
| 9/27/2012 4:09 PM | File folder |      |

### Angry Birds Setup



## Welcome to the Angry Birds Setup Wizard

The Setup Wizard will install Angry Birds on your computer. Click "Next" to continue or "Cancel" to exit the Setup Wizard.

< Back   Next >   Cancel

The example will install Angry Birds on the server. The drive is still mapped as before.

The Angry Bird program came from <http://www.download-free-games.com/>

Player | [Icons]

preuss > Downloads | Search Downloads

Organize | Open | Share with | Burn | New folder

| Name                          | Date modified      | Type        | Size |
|-------------------------------|--------------------|-------------|------|
| cpu-sim                       | 7/30/2012 7:53 PM  | File folder |      |
| crypttool                     | 7/30/2012 7:53 PM  | File folder |      |
| hash                          | 7/30/2012 7:53 PM  | File folder |      |
| keyfinder                     | 7/30/2012 7:53 PM  | File folder |      |
| pmg                           | 9/19/2012 10:24 AM | File folder |      |
| pong                          |                    |             |      |
| AngryBirdsInstaller_2.2.0.exe |                    |             |      |
| anyconnect-win-2.3.2016-web   |                    |             |      |
| anyconnect-win-2.3.2016-web   |                    |             |      |
| LibO_3.6.1_Win_x86_helppack_e |                    |             |      |
| LibO_3.6.1_Win_x86_install_mu |                    |             |      |
| mseinstall.exe                |                    |             |      |

Angry Birds Setup

**End-User License Agreement**

Please read the following license agreement carefully

**ANGRY BIRDS**

**LIMITED SOFTWARE WARRANTY AND LICENSE AGREEMENT FOR END USERS**

YOUR USE OF THE SOFTWARE IS SUBJECT TO THIS LIMITED SOFTWARE WARRANTY AND LICENSE AGREEMENT FOR END USERS (THE "AGREEMENT") AND THE TERMS SET FORTH BELOW. THE "SOFTWARE" INCLUDES ALL SOFTWARE INCLUDED WITH THIS AGREEMENT, THE ACCOMPANYING MANUAL(S), PACKAGING AND OTHER WRITTEN, FILES, ELECTRONIC OR ON-LINE MATERIALS OR DOCUMENTATION, AND ANY AND ALL

I accept the terms in the License Agreement

I do not accept the terms in the License Agreement

< Back | Next > | Cancel

AngryBirdsInstaller\_2.2.0.exe | Application | State: [Icons] | Date modified: 9/27/2012

Search zenonapps (\chile) (P:) | [Icons]

Date modified | Type | Size

9/27/2012 4:09 PM | File folder

Offline status: Online

Line availability: Not available

You may want a copy of the license agreement for a lab.

The example accepts the license and continues.

File Explorer window showing the 'Downloads' folder. The address bar shows 'preuss > Downloads'. The search bar contains 'Search Downloads'. The left sidebar shows 'Favorites' (Desktop, Downloads, Recent Places) and 'Libraries' (Documents, Music, Pictures, Videos). The main pane shows a list of files and folders:

| Name                          | Date modified      | Type        | Size |
|-------------------------------|--------------------|-------------|------|
| cpu-sim                       | 7/30/2012 7:53 PM  | File folder |      |
| crypttool                     | 7/30/2012 7:53 PM  | File folder |      |
| hash                          | 7/30/2012 7:53 PM  | File folder |      |
| keyfinder                     | 7/30/2012 7:53 PM  | File folder |      |
| pmg                           | 9/19/2012 10:24 AM | File folder |      |
| pong                          |                    |             |      |
| AngryBirdsInstaller_2.2.0.exe |                    |             |      |
| anyconnect-win-2.3.2016-web   |                    |             |      |
| anyconnect-win-2.3.2016-web   |                    |             |      |
| LibO_3.6.1_Win_x86_helppack_e |                    |             |      |
| LibO_3.6.1_Win_x86_install_mu |                    |             |      |
| mseinstall.exe                |                    |             |      |

Taskbar: AngryBirdsInstaller\_2.2.0.exe Application | State: [Icon] | Date modified: 9/27/2012 | Advanced Installer

Angry Birds Setup dialog box. Title: Angry Birds Setup. Header: ANGRY BIRDS. Sub-header: Change current destination folder. Instruction: Browse to the destination folder.

Look in: Angry Birds

Folder name: P:\Angry Birds\

Buttons: Cancel, OK

File Explorer window showing the 'zenonapps (\chile) (P:)' folder. The address bar shows 'Search zenonapps (\chile) (P:)'. The search bar contains 'Search zenonapps (\chile) (P:)'. The main pane shows a list of files and folders:

| Date modified     | Type        | Size |
|-------------------|-------------|------|
| 9/27/2012 4:09 PM | File folder |      |

Taskbar: Offline status: Online | Offline availability: Not available

The example mapped drive P: to the share. Note how the example tells Angry Birds where to go.

File Explorer window showing the 'Downloads' folder. The address bar shows 'preuss > Downloads'. The search bar contains 'Search Downloads'. The left sidebar shows 'Favorites' (Desktop, Downloads, Recent Places) and 'Libraries' (Documents, Music, Pictures, Videos). The main pane shows a list of files and folders:

| Name                          | Date modified      | Type        | Size |
|-------------------------------|--------------------|-------------|------|
| cpu-sim                       | 7/30/2012 7:53 PM  | File folder |      |
| crypttool                     | 7/30/2012 7:53 PM  | File folder |      |
| hash                          | 7/30/2012 7:53 PM  | File folder |      |
| keyfinder                     | 7/30/2012 7:53 PM  | File folder |      |
| pmg                           | 9/19/2012 10:24 AM | File folder |      |
| pong                          |                    |             |      |
| AngryBirdsInstaller_2.2.0.exe |                    |             |      |
| anyconnect-win-2.3.2016-web   |                    |             |      |
| anyconnect-win-2.3.2016-web   |                    |             |      |
| LibO_3.6.1_Win_x86_helppack_e |                    |             |      |
| LibO_3.6.1_Win_x86_install_mu |                    |             |      |
| mseinstall.exe                |                    |             |      |

Angry Birds Setup window. Title: Angry Birds Setup. Subtitle: Select Installation Folder. Text: This is the folder where Angry Birds will be installed. To install in this folder, click "Next". To install to a different folder, enter it below or click "Browse".

Folder:

< Back   Next >   Cancel

File Explorer window showing the 'zenonapps (\chile) (P:)' folder. The address bar shows 'Search zenonapps (\chile) (P:)'. The search bar contains 'Search zenonapps (\chile) (P:)'. The main pane shows a list of files and folders:

| Date modified     | Type        | Size |
|-------------------|-------------|------|
| 9/27/2012 4:09 PM | File folder |      |

1 item   Offline status: Online   Offline availability: Not available

The installer is checking if the example really meant drive P:\Angry Birds\. The example did.

File Explorer window showing the Downloads folder. The address bar shows the path: `preuss > Downloads`. The search bar contains `Search Downloads`. The file list is as follows:

| Name                          | Date modified      | Type        | Size |
|-------------------------------|--------------------|-------------|------|
| cpu-sim                       | 7/30/2012 7:53 PM  | File folder |      |
| crypttool                     | 7/30/2012 7:53 PM  | File folder |      |
| hash                          | 7/30/2012 7:53 PM  | File folder |      |
| keyfinder                     | 7/30/2012 7:53 PM  | File folder |      |
| pmg                           | 9/19/2012 10:24 AM | File folder |      |
| pong                          |                    |             |      |
| AngryBirdsInstaller_2.2.0.exe |                    |             |      |
| anyconnect-win-2.3.2016-web   |                    |             |      |
| anyconnect-win-2.3.2016-web   |                    |             |      |
| LibO_3.6.1_Win_x86_helppack_e |                    |             |      |
| LibO_3.6.1_Win_x86_install_mu |                    |             |      |
| mseinstall.exe                |                    |             |      |

Angry Birds Setup window. The title bar reads "Angry Birds Setup". The main content area has a red header with the "ANGRY BIRDS" logo. Below the header, the text reads: "Ready to Install. The Setup Wizard is ready to begin the Angry Birds installation." A larger block of text says: "Click 'Install' to begin the installation. If you want to review or change any of your installation settings, click 'Back'. Click 'Cancel' to exit the wizard." At the bottom, there are three buttons: "< Back", "Install", and "Cancel".

The installer begins the installation.

File Explorer window showing the zenonapps folder. The address bar shows the path: `Search zenonapps (\chile) (P:)`. The search bar contains `Search zenonapps (\chile) (P:)`. The file list is as follows:

| Date modified     | Type        | Size |
|-------------------|-------------|------|
| 9/27/2012 4:09 PM | File folder |      |

File Explorer window showing the Downloads folder. The address bar shows the path: `preuss > Downloads`. The search bar contains `Search Downloads`. The main pane displays a list of files and folders:


| Name                          | Date modified      | Type        | Size |
|-------------------------------|--------------------|-------------|------|
| cpu-sim                       | 7/30/2012 7:53 PM  | File folder |      |
| crypttool                     | 7/30/2012 7:53 PM  | File folder |      |
| hash                          | 7/30/2012 7:53 PM  | File folder |      |
| keyfinder                     | 7/30/2012 7:53 PM  | File folder |      |
| pmg                           | 9/19/2012 10:24 AM | File folder |      |
| pong                          |                    |             |      |
| AngryBirdsInstaller_2.2.0.exe |                    |             |      |
| anyconnect-win-2.3.2016-web   |                    |             |      |
| anyconnect-win-2.3.2016-web   |                    |             |      |
| LibO_3.6.1_Win_x86_helppack_e |                    |             |      |
| LibO_3.6.1_Win_x86_install_mu |                    |             |      |
| mseinstall.exe                |                    |             |      |

At the bottom of the window, the file `AngryBirdsInstaller_2.2.0.exe` is selected, showing its state and date modified.

Angry Birds Setup window with a User Account Control dialog box overlaid.

**User Account Control**

Do you want to allow the following program to install software on this computer?

 Program name: Angry Birds  
Verified publisher: **Rovio Entertainment Ltd.**  
File origin: Hard drive on this computer

Show details

[Change when these notifications appear](#)

Advanced Installer

File Explorer window showing the zenonapps folder. The address bar shows the path: `Search zenonapps (\chile) (P:)`. The search bar contains `Search zenonapps (\chile) (P:)`. The main pane displays a list of files and folders:

| Date modified     | Type        | Size |
|-------------------|-------------|------|
| 9/27/2012 4:09 PM | File folder |      |

File Explorer window showing the Downloads folder. The address bar shows the path: `preuss > Downloads`. The search bar contains `Search Downloads`. The menu bar includes `Organize`, `Open`, `Share with`, `Burn`, and `New folder`. The left sidebar shows Favorites (Desktop, Downloads, Recent Places) and Libraries (Documents, Music, Pictures, Videos, Computer, Network). The main pane displays a list of files and folders:

| Name                          | Date modified      | Type        | Size |
|-------------------------------|--------------------|-------------|------|
| cpu-sim                       | 7/30/2012 7:53 PM  | File folder |      |
| crypttool                     | 7/30/2012 7:53 PM  | File folder |      |
| hash                          | 7/30/2012 7:53 PM  | File folder |      |
| keyfinder                     | 7/30/2012 7:53 PM  | File folder |      |
| pmg                           | 9/19/2012 10:24 AM | File folder |      |
| pong                          |                    |             |      |
| AngryBirdsInstaller_2.2.0.exe |                    |             |      |
| anyconnect-win-2.3.2016-web   |                    |             |      |
| anyconnect-win-2.3.2016-web   |                    |             |      |
| LibO_3.6.1_Win_x86_helppack_e |                    |             |      |
| LibO_3.6.1_Win_x86_install_mu |                    |             |      |
| mseinstall.exe                |                    |             |      |

Angry Birds Setup window titled "Completing the Angry Birds Setup Wizard". It features a red background with a red Angry Bird and a green pig. The text reads: "Click the 'Finish' button to exit the Setup Wizard." There is a checked checkbox for "Launch Angry Birds". At the bottom are buttons for "< Back", "Finish", and "Cancel".

File Explorer window showing the zenonapps (\chile) (P:) folder. The address bar shows the path: `Search zenonapps (\chile) (P:)`. The search bar contains `Search zenonapps (\chile) (P:)`. The menu bar includes `Organize`, `Open`, `Share with`, `Burn`, and `New folder`. The left sidebar shows Favorites (Desktop, Downloads, Recent Places) and Libraries (Documents, Music, Pictures, Videos, Computer, Network). The main pane displays a list of files and folders:

| Date modified     | Type        | Size |
|-------------------|-------------|------|
| 9/27/2012 4:23 PM | File folder |      |
| 9/27/2012 4:09 PM | File folder |      |

The installation is complete. The example will naturally test the program.



File Explorer window showing the 'Downloads' folder. The address bar shows 'preuss > Downloads'. The search bar contains 'Search Downloads'. The left sidebar shows 'Favorites' (Desktop, Downloads, Recent Places) and 'Libraries' (Documents, Music, Pictures, Videos). The main pane shows a list of files and folders:

| Name                          | Date modified      | Type        | Size |
|-------------------------------|--------------------|-------------|------|
| cpu-sim                       | 7/30/2012 7:53 PM  | File folder |      |
| crypttool                     | 7/30/2012 7:53 PM  | File folder |      |
| hash                          | 7/30/2012 7:53 PM  | File folder |      |
| keyfinder                     | 7/30/2012 7:53 PM  | File folder |      |
| pmg                           | 9/19/2012 10:24 AM | File folder |      |
| pong                          |                    |             |      |
| AngryBirdsInstaller_2.2.0.exe |                    |             |      |
| anyconnect-win-2.3.2016-web   |                    |             |      |
| anyconnect-win-2.3.2016-web   |                    |             |      |
| LibO_3.6.1_Win_x86_helppack_e |                    |             |      |
| LibO_3.6.1_Win_x86_install_mu |                    |             |      |
| mseinstall.exe                |                    |             |      |

Angry Birds Setup window with an 'Open File - Security Warning' dialog box overlaid. The dialog box asks 'Do you want to run this file?' and provides the following information:

- Name: P:\Angry Birds\AngryBirds.exe
- Publisher: Rovio Entertainment Ltd.
- Type: Application
- From: P:\Angry Birds\AngryBirds.exe

Buttons: Run, Cancel

Warning text: While files from the Internet can be useful, this file type can potentially harm your computer. Only run software from publishers you trust. [What's the risk?](#)

Buttons: < Back, Finish, Cancel

File Explorer window showing the 'zenonapps (\chile) (P:)' folder. The address bar shows 'Search zenonapps (\chile) (P:)'. The search bar contains 'Search zenonapps (\chile) (P:)'. The main pane shows a list of files and folders:

| Date modified     | Type        | Size |
|-------------------|-------------|------|
| 9/27/2012 4:23 PM | File folder |      |
| 9/27/2012 4:09 PM | File folder |      |

The example gives the program permission to run.

# ANGRY BIRDS

The example is happy.



ACTIVATE FULL VERSION!



File Explorer window showing the path: `preuss > Downloads`. The search bar contains `Search Downloads`. The menu bar includes `Organize`, `Open`, `Share with`, `Burn`, and `New folder`.

| Name                                    | Date modified      | Type        | Size |
|---|--------------------|-------------|------|
| cpu-sim                                 | 7/30/2012 7:53 PM  | File folder |      |
| crypttool                               | 7/30/2012 7:53 PM  | File folder |      |
| hash                                    | 7/30/2012 7:53 PM  | File folder |      |
| keyfinder                               | 7/30/2012 7:53 PM  | File folder |      |
| pmg                                     | 9/19/2012 10:24 AM | File folder |      |
| pong                                    | 9/26/2012 10:26 AM | File folder |      |
| AngryBirdsInstaller_2.2.0.exe           |                    |             |      |
| anyconnect-win-2.3.2016-web-deploy-k... |                    |             |      |
| anyconnect-win-2.3.2016-web-deploy-k... |                    |             |      |
| LibO_3.6.1_Win_x86_helppack_en-US.msi   |                    |             |      |
| LibO_3.6.1_Win_x86_install_multi.msi    |                    |             |      |
| mseinstall.exe                          |                    |             |      |

File Explorer window showing the path: `Computer > zenonapps (\\chile) (P:) > Angry Birds`. The search bar contains `Search Angry Birds`. The menu bar includes `Organize`, `Burn`, and `New folder`.

| Name            | Date modified     | Type                  | Size     |
|-----------------|-------------------|-----------------------|----------|
| data            | 9/27/2012 4:23 PM | File folder           |          |
| Angry Birds.gdf | 8/2/2012 8:22 AM  | GDF File              | 164 KB   |
| AngryBirds.exe  | 8/2/2012 8:21 AM  | Application           | 1,511 KB |
| config.lua      | 7/9/2012 4:18 PM  | LUA File              | 1 KB     |
| msvcp100.dll    | 8/2/2012 8:19 AM  | Application extens... | 412 KB   |
| msvcr100.dll    | 8/2/2012 8:19 AM  | Application extens... | 756 KB   |
| updater.exe     | 8/2/2012 8:22 AM  | Application           | 209 KB   |
| updater.ini     | 9/27/2012 4:23 PM | Configuration sett... | 1 KB     |

Angry Birds will only work if drive P: is mapped to \\chile\zenonapps. This slide shows the executable and supporting files on the server.



Chile-Data (E:)

Computer > Chile-Data (E:)

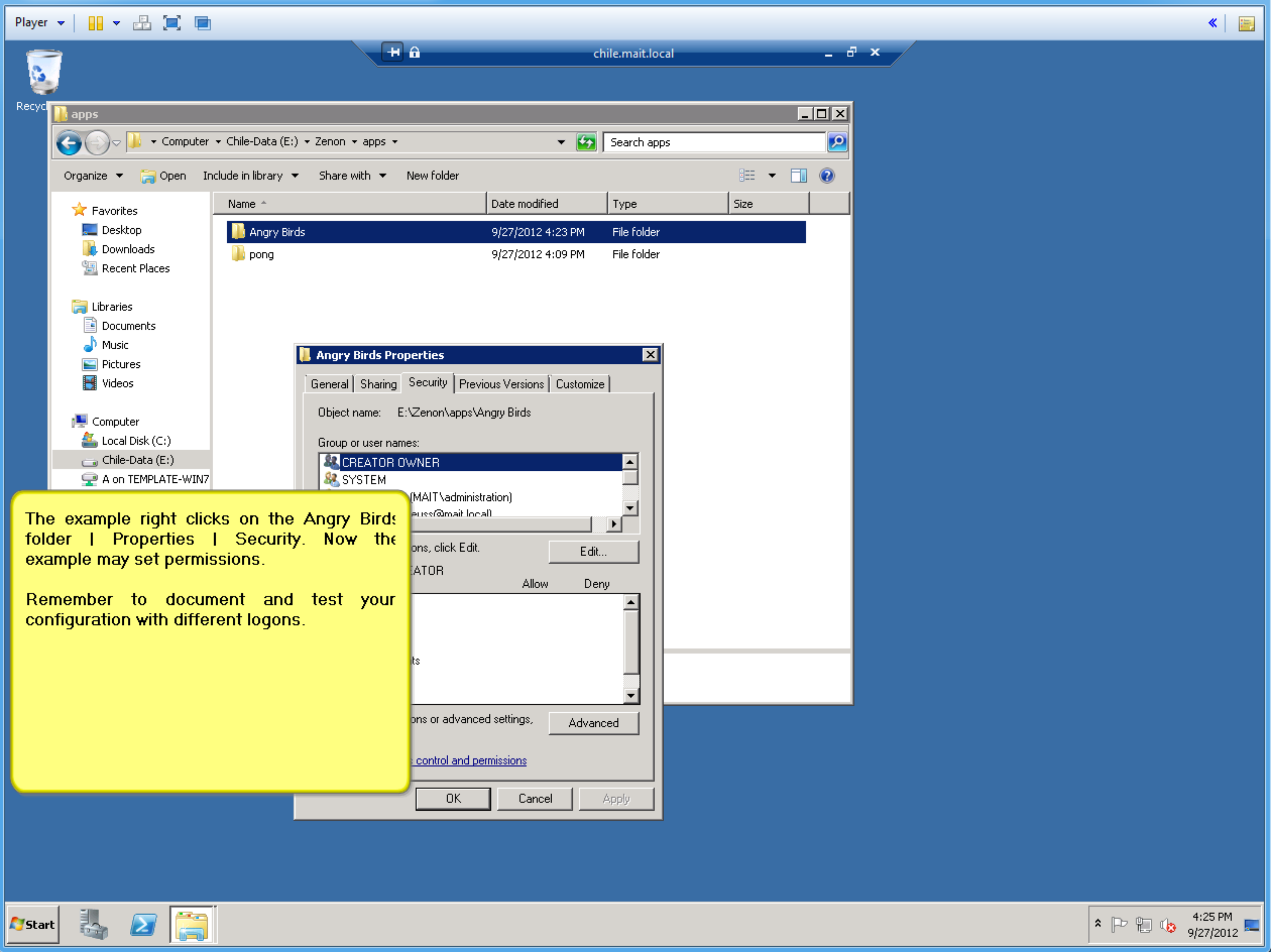
Search Chile-Data (E:)

Organize | Open | Include in library | Share with | New folder

| Name  | Date modified     | Type        | Size |
|-------|-------------------|-------------|------|
| TES   | 8/14/2012 2:43 PM | File folder |      |
| TOG   | 8/14/2012 2:43 PM | File folder |      |
| TPE   | 8/14/2012 2:43 PM | File folder |      |
| TRI   |                   |             |      |
| TUN   |                   |             |      |
| TUR   |                   |             |      |
| TUV   |                   |             |      |
| UAE   |                   |             |      |
| UGA   |                   |             |      |
| UKR   |                   |             |      |
| URU   |                   |             |      |
| USA   |                   |             |      |
| UZB   |                   |             |      |
| VAN   |                   |             |      |
| VEN   |                   |             |      |
| VIE   |                   |             |      |
| VIN   | 8/14/2012 2:43 PM | File folder |      |
| YEM   | 8/14/2012 2:43 PM | File folder |      |
| ZAM   | 8/14/2012 2:43 PM | File folder |      |
| Zenon | 8/14/2012 2:42 PM | File folder |      |

Zenon Date modified: 8/14/2012 2:42 PM  
File folder

Using Remote Desktop Connection, the example goes to drive E:. The example selects the organization unit folder.



The example right clicks on the Angry Birds folder | Properties | Security. Now the example may set permissions.

Remember to document and test your configuration with different logons.

**Angry Birds Properties**

General | Sharing | Security | Previous Versions | Customize

Object name: E:\Zenon\apps\Angry Birds

Group or user names:

- CREATOR OWNER
- SYSTEM
- (MAIT\administration)
- ...@mait.local

...ons, click Edit. Edit...

|     | Allow | Deny |
|-----|-------|------|
| ... |       |      |

...ons or advanced settings. Advanced

...control and permissions

OK Cancel Apply